

USDA-APHIS-WILDLIFE SERVICES

COOPERATIVE BEAVER DAMAGE MANAGEMENT PROGRAM IN WISCONSIN

History:

Beginning in 1988 the USFS and DNR requested Wildlife Services to remove beaver and beaver dams to rehabilitate designated trout streams. The first County Beaver Damage Management Program was established in 1989. This program was a result of County Forest Administrators and County Highway Departments lobbying Legislators and State Representatives to provide funding to address beaver conflicts to roads and timber resources. To date, 12 Counties and approximately 50 Townships enroll in this program.

Wildlife Services Cooperating Agencies:

Wisconsin DNR

U.S. Forest Service

Wisconsin Counties

Townships

Trout Unlimited

Tribal Governments

Private Organizations

Resources Protected:

Cold Water Ecosystems
(Trout Habitat)

Roads/Bridges/Culverts

Timber

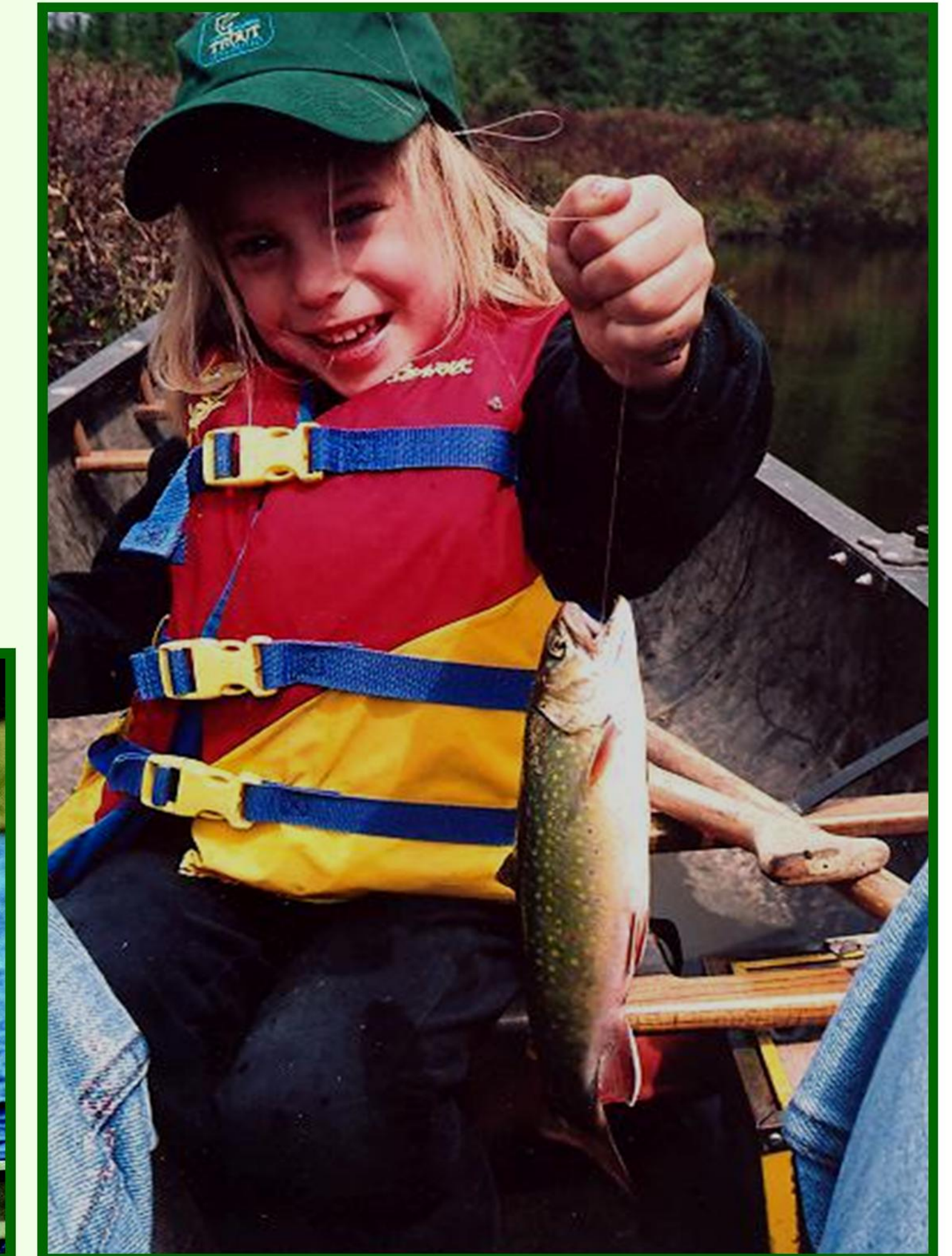
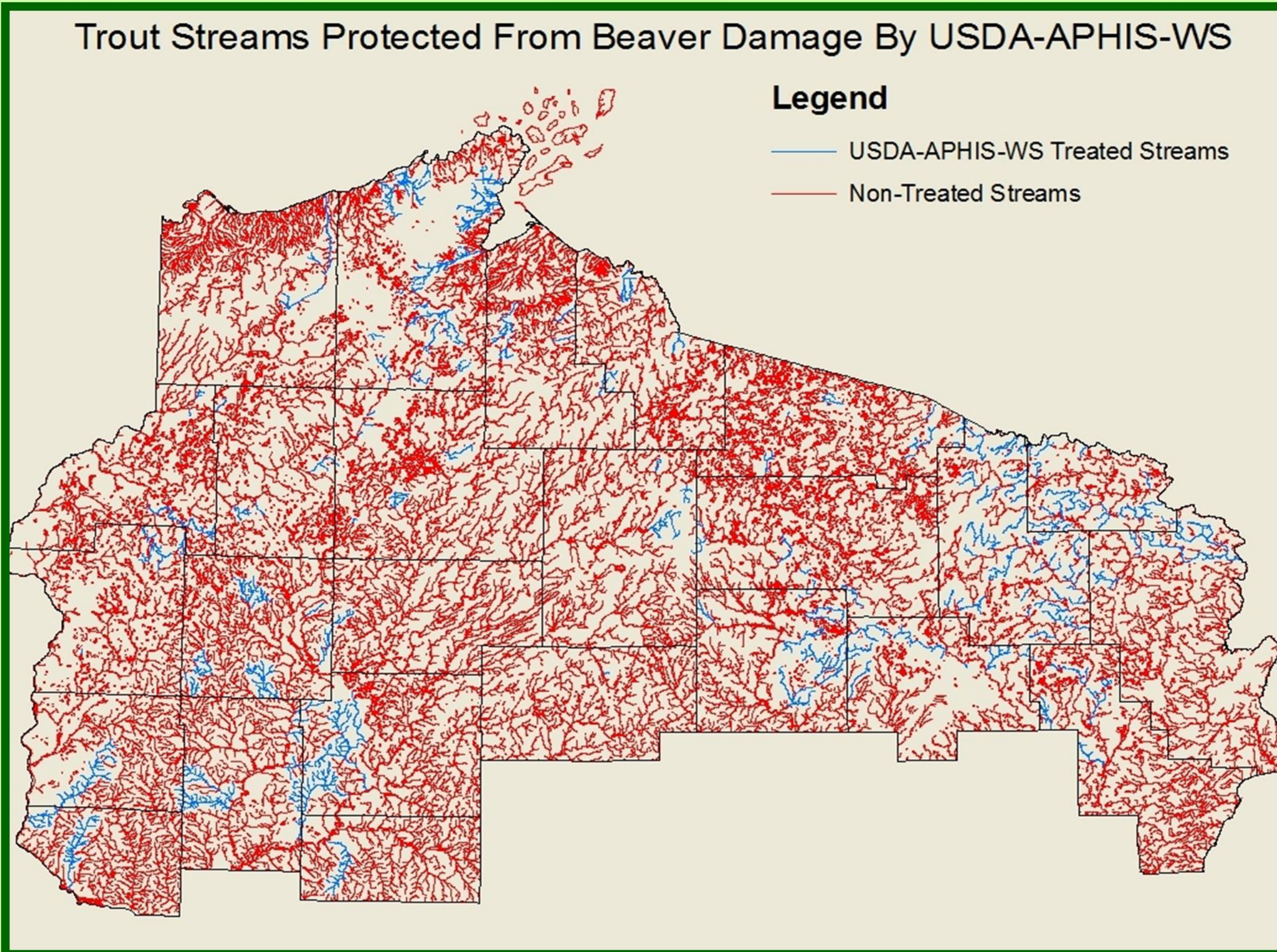
Unique Habitats

Wild Rice

Snowmobile/ATV Trails

Wildlife Impoundments

Agricultural Crops



WS Licensed Blaster Preparing To Remove A Beaver Dam



KABOOM!



Trout Stream Returned To Free-Flowing

WS Cooperative Beaver Damage Management programs are cost effective due to multi-agency interest and funding. This allows WS to protect many resources across Wisconsin for everyone to enjoy.

Did You Know?

- 🦫 The Brook Trout is Wisconsin's only native trout found in streams, and that Wisconsin has over 10,500 miles of trout streams.
- 🦫 Private trappers harvest approximately 40,000 beaver annually. WS removes approximately 1,200 beaver and over 1,000 beaver dams annually to protect a variety of resources.
- 🦫 Beaver dams block fish migration, increase siltation that buries spawning areas, and increase water temperatures.
- 🦫 DNR confirms that beaver and beaver dam removal is the most cost effective management tool for trout habitat protection.
- 🦫 Traditional trout stream habitat improvement projects (e.g. stream bank covers) can cost from \$3,000 to \$50,000 per mile.
- 🦫 WS' trout stream maintenance costs are approximately \$300 per mile.
- 🦫 WS donates a portion of fur salvage proceeds to the Future Trappers of Wisconsin Program.

Benefits:

- 🦫 WS protects 1,500 miles on approximately 200 trout streams. DNR estimates this saves a potential loss of 1.9 million dollars annually.
- 🦫 WS beaver habitat restoration activities on trout streams have increased natural reproduction, eliminating the need for stocking in many areas.
- 🦫 WS beaver damage management activities protect expensive habitat improvement projects.
- 🦫 WS resolves approximately 200 beaver road conflicts annually saving over one million dollars in damage.

Program Administration/Methods:

Supervised Program

Oversight by Wildlife Biologists

Accurate Take Reports

Non-Target Reporting

Beaver Dam Removal -
Explosives and Manual

Aerial and Ground Surveys

