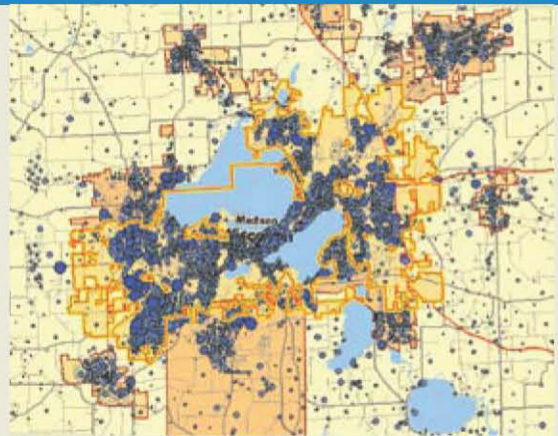


Mapping with the Census

On the Map, a Web-based mapping tool developed by the U.S. Census Bureau, makes it easy to obtain data of where people live in relation to where they work and generate reports and maps using the data. For example, according to On the Map, 35.9 percent of the 203,423 jobs in the city of Madison in 2004 were filled by people living in the city. Conversely, 32.1 percent of all employed Madison residents (34,478 people) worked outside the city in 2004. On the Map is part of the Census' Local Employment Dynamics (LED)

program and provides workforce statistics at the state, county, and community levels. The Census utilizes two data sources: The Quarterly Census of Employment and Wages, and the Unemployment Insurance Wage. A good tour and tutorial of On the Map is available on the Census Web site at: http://lehd.did.census.gov/led/datatools/elearning/On_the_Map/index.htm.



U.S. Census – On the Map

Madison's jobs

Where people who work in Madison live, 2004:

	Number of Madison jobs	Share
Madison	72,928	35.9%
Fitchburg	7,166	3.5%
Sun Prairie	5,584	2.7%
Middleton	5,400	2.7%
Milwaukee	3,840	1.9%
Monona	2,966	1.5%
Stoughton	2,734	1.3%
Waunakee	2,583	1.3%
Verona	2,452	1.2%
McFarland	2,337	1.1%
Total (all jobs)	203,423	

PART 2 of this month's series on U.S. Census tools

QUESTIONS? Contact Professor Bill Pinkovitz, Center for Community and Economic Development, UW-Extension at bill.pinkovitz@ces.uwex.edu.

Economic Snapshot is a weekly feature provided by the

