

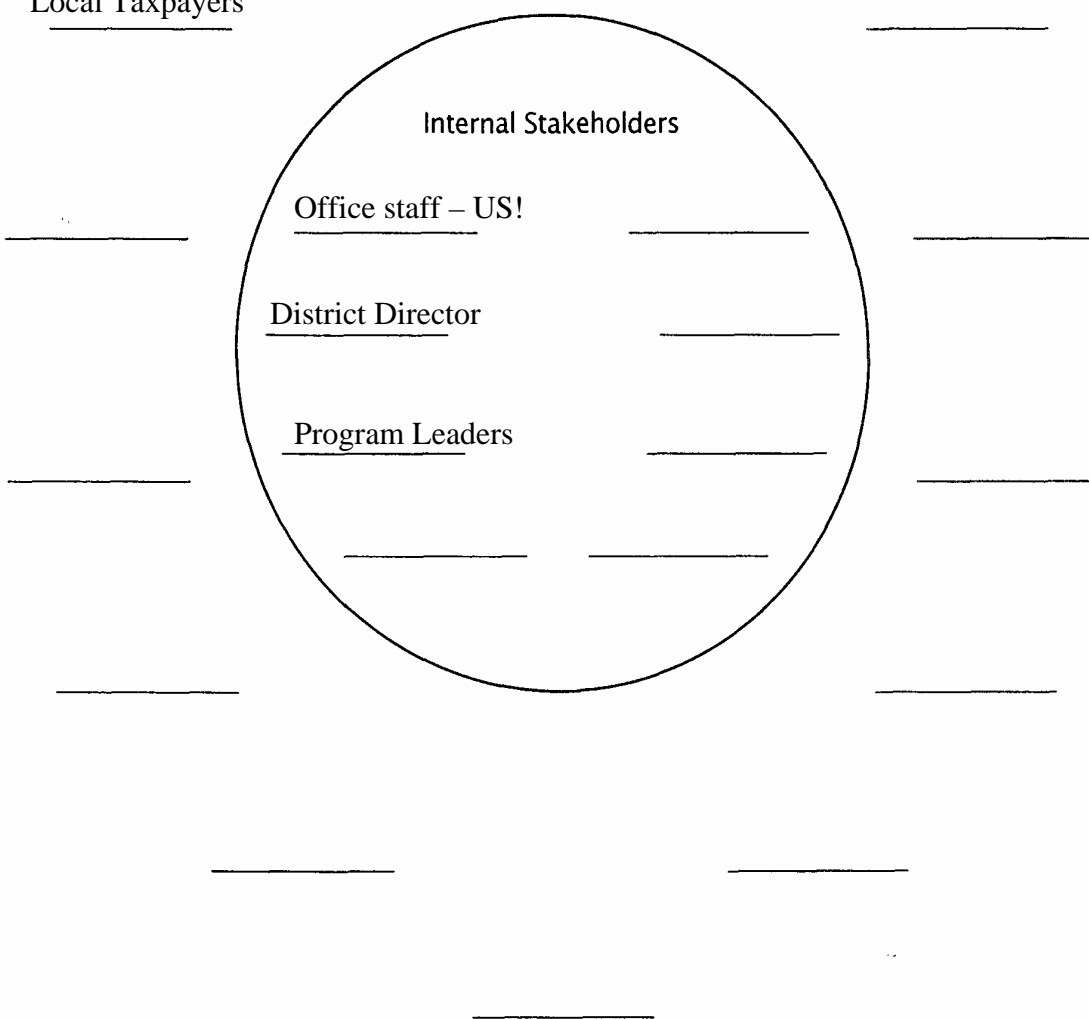
This worksheet is similar to Worksheet 9 in the Bryson & Alston **Creating and Implementing Your Strategic Plan** workbook, for those of you who have participated in this Extension-sponsored training. You can use this to help your county office articulate internal and external stakeholders. Be as specific as possible about the individuals or groups who might care about the outcomes of, provide resources for, and/or are affected by your programs.

## Example County Stakeholder Identification

### External Stakeholders

Program Participants \_\_\_\_\_

Local Taxpayers \_\_\_\_\_



Adapted from Bryson, John M. and Farnum K. Alston. *Creating and Implementing Your Strategic Plan*. Jossey-Bass Publishers, San Francisco, 1996.