

Turtle Lakes 5 Year Watershed Education and Best Management Practices Lake Protection Project

**Subtitle: Planning is Easy, Implementation is
Not!**

March 22, 2012

Presented by: Dave Blumer, SEH

With input from Ken Bonner, Corry Walbridge,
and Harland Becker, Turtle Lakes Stakeholders Board

1. Benson Creek
2. Knuteson Creek
3. Forty-One Creek
4. Thirty-three Creek
5. Sucker Creek
6. Louler Creek
7. Hemlock Creek
8. Three Lakes No. 1 (T36N R9W S2)
9. S Fork Hemlock Creek
10. Pigeon Creek
11. Rock Creek
12. Bass Lake (T34N R9W S16)
13. Red Cedar Lake
14. Harmon Lake
15. Long Lake
16. Brill River
17. Bear Lake
18. Sylvan Lake
19. Silver Lake
20. Lake Desair
21. Beaver Dam Lake
22. Yellow River
23. Hickey Creek
24. Engle Creek
25. Red Cedar River
26. Moose Ear Creek
27. Prairie Lake
28. Mud Lake
29. Lake Chetek
30. Bass Lake T33 R10 Sec34
31. Ten Mile Lake
32. Fish Lake
33. Pine Lake
34. Brown Creek
35. Upper Pine Creek
36. Dority Creek
37. Silver Creek
38. Jones Creek
39. Vance Creek
40. Creek 8-3 T31N R10W
41. Sand Creek
42. Spring Brook
43. Glenn Lake
44. Coon Creek
45. Red Cedar River
46. Tainter Lake
47. Lake Menomin



Listed Waters Map

Listed Waters

- 303(d) Listed
- Exceptional Resource Waters
- Outstanding Resource Waters
- Sub Watersheds
- Streams / Rivers



For information on specific subwatersheds, 303(d) or Exceptional/Outstanding Resource Waters (ERW/ORW):
<http://dnr.wi.gov/org/water/wm/wqs/303d/faqs.html> and <http://dnr.wi.gov/org/gmu/gppsp/gpbasin/>

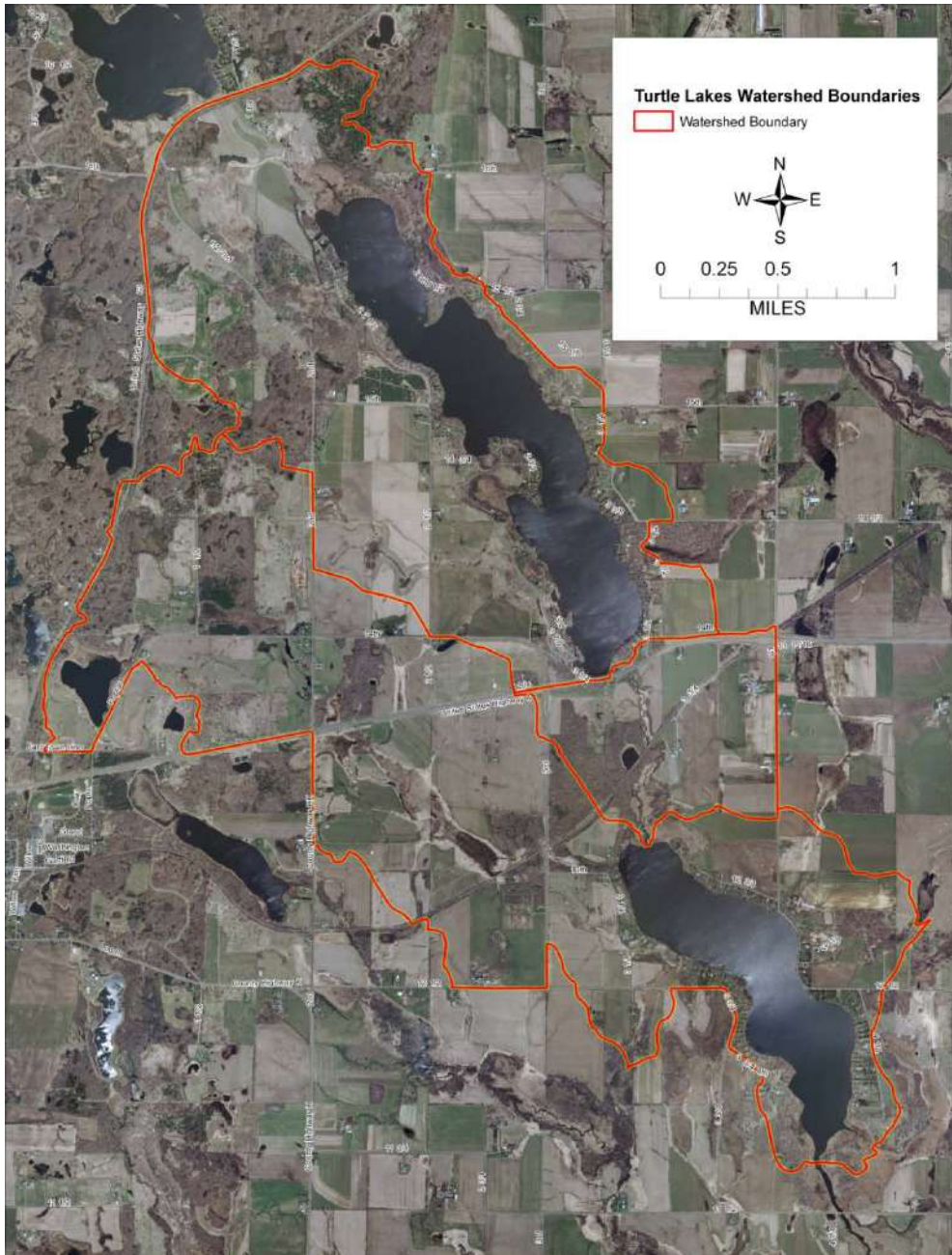
Why?

-2010 303(d)
 Impaired waters listing (total phosphorus) NPS
 -Previous studies

Turtle Lakes Watershed

-Approx. 5000 acres
 -Approx 3000 in agricultural practices each year
 -Approx 60% of that area in row crops
 -6-10 active agricultural producers

For more information on waters designated as Exceptional or Outstanding Resources waters, visit: <http://dnr.wi.gov/org/water/wm/wqs/orwerw/>



**Dairy farmers and
crop farmers (owned
and rented ground)**

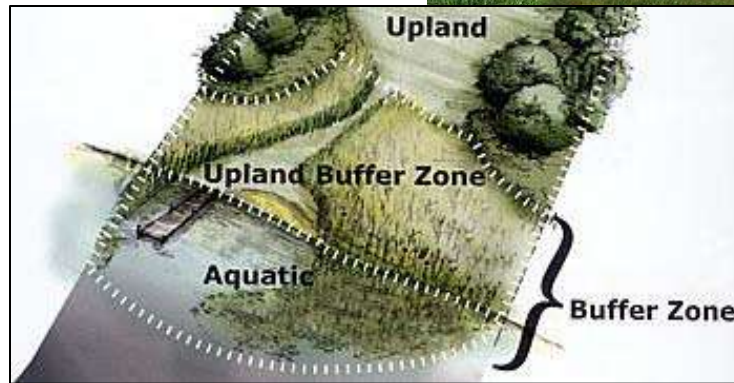
**Well-developed
shoreline on both
lakes**

Project Particulars

- \$305,420 5-year project (2010-2014)
- \$200,000 granted from the state from the Lake Management Planning and Protection Program
- \$157,500 available for reimbursement of eligible project costs
- \$42,500 to cover water sampling costs
- Donated Services = \$39,860
- Volunteer Time (\$12.00/hr) = \$54,388

Project Components

- Farmer Education
- “No Till” Farmers Incentive Program
- Agricultural Best Management Practices Cost-sharing
- Riparian Owner Education
- Shoreline Best Management Practices Project Cost-sharing



More Project Components

- Expanded Water Quality Monitoring in both lakes
- Tributary Monitoring
- Aquatic Plant Management Planning for both lakes
- Overall Project Management
- Best Management Practices Stakeholders Board

Partners/Participants

- **Lower Turtle Lake Management District**
- **Upper Turtle Lake Association**
- **Lower Turtle Lake Association**
- **Turtle Lakes Watershed Farmers**
- **Barron County Soil and Water Conservation Department**
- **Town of Almena**
- **UW-Extension Agricultural Agent**
- **Wisconsin Department of Natural Resources**
- **Green Frog Consulting**
- **Short Elliot Hendrickson, Inc (SEH)**

Nine Member Stakeholders Board

Lower Turtle Lake Management District (2 members)

Lower Turtle Lake Association/At large (1 member)

Upper Turtle Lake Association (2 members)

Local Farmers (2 members)

Barron County Soil and Water Conservation
Department (1 member)

Project Consultant (1 member)

*WDNR Liaison

“If you build it, they will come!”

1989 film **Field of Dreams**, starring Kevin Costner



They Didn't!!

A cartoon illustration of a hand holding a large green dollar bill. The hand is positioned at the top left, with the thumb and index finger gripping the top edge of the bill. The bill is oriented vertically, with the top edge towards the right. The bill features a large, stylized '1' in the center, surrounded by intricate patterns and a smaller '1' in the bottom right corner. The background is white.

**Let's Give Some
Money Away!!**

We Couldn't!!

- **No till just makes sense! Everyone should take advantage of it!**

- High corn prices makes incentive payments less appealing
- Tradition
- Change means more work, new equipment
- Negative stereotype that no till loses money
- In person, one on one contact needed, letters just don't cut it
- Time is a valuable entity to farmers

- **Best Management Practices Projects**

- Must identify and design projects
- What is reasonable compensation?
- Multiple levels of approval
- Show me what others are doing, what are lake people doing
- Requires legal contracts including deed restrictions, notary
- Must meet all local, county, state, and federal guidelines in order to be reimbursable in the grant
- Requires meticulous record keeping, follow-up

• Shoreland Improvement Projects

- Identifying and classification of interested parties
- Completing shoreland site evaluations
 - Must meet local, county, state, and federal guidelines in order to be reimbursable
 - These guidelines were identified to a greater extent in 2011
- Implementing shoreland improvement projects with grant dollars requires perpetual property deed restrictions
 - Creation of these documents
- No money to support implementation without grant dollars

No Till Incentives, Cover Crop, and BMP payments to date

- No Till Incentives Payments (2010-11)

- Two farmers
- \$4,742.50

- Cover Crop Payments (2011)

- Two farmers
- \$947.66

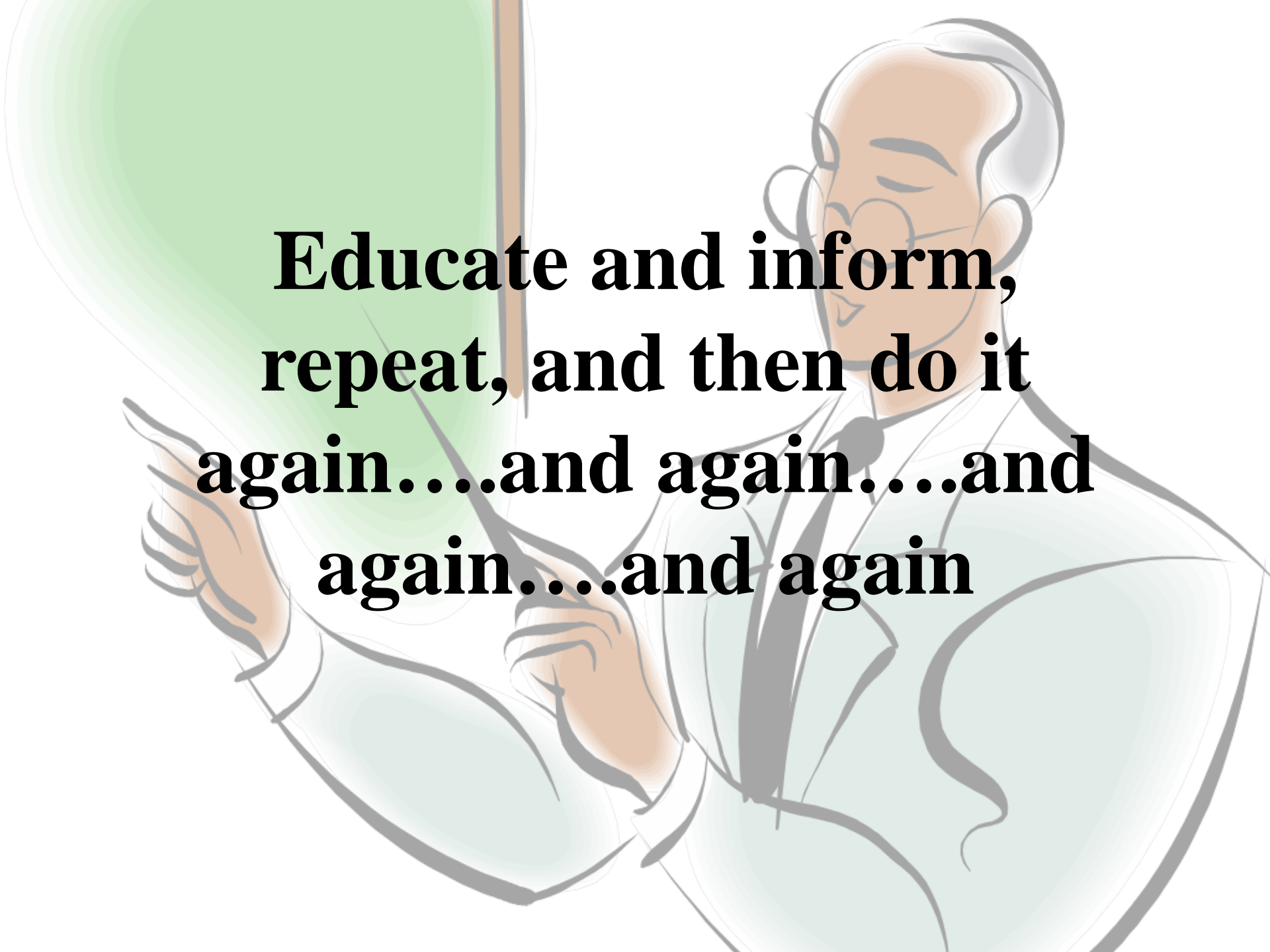


BMP Projects (2011-12)

- one farm
- included roof runoff diversion, grassed waterways, crowning of driveways, fencing out of livestock, and nutrient management planning
- 70% Project reimbursement
- 30% Landowner match
- \$11, 224.00

Riparian projects to date

- Preliminary boat landing site visits
 - Not completed yet
- Seven private property site evaluations completed
 - None implemented yet
 - None planning to use grant dollars to help support implementation
- Shoreland Improvement Interest Survey
 - Distributed to property owners on both lakes

An illustration of a man with grey hair and glasses, wearing a light blue suit and a dark tie. He is pointing his right hand towards a large green screen on the left side of the image. The text is overlaid on the screen and the man's torso.

**Educate and inform,
repeat, and then do it
again....and again....and
again....and again**

Education activities completed to date

- **Agricultural**

- Farmers' Dinner
- Farmer Letters
- Farmer Meetings
- Site Tours
- In person visits

- **Riparian**

- Kickoff Breakfast
- Lake Fair
- Site tours
- Newsletters
- AIS monitoring
- Watercraft inspection
- Water quality monitoring
- Boat landing pre-evaluations





- **Stakeholders Board**

- Individual project approvals
- Tracking volunteer and donated services
- Input and ideas
- Working with sub-contractors
- Reporting back to respective organizations
- Tracking progress

- **Finances**

- Tracking expenditures
- Cutting checks
- Making money available (spent first, then reimbursed)
- Seeking project reimbursement

- **Volunteer and donated services**

How are we addressing these issues?

- More personal contact with farmers; farmer to farmer contact
- Shoreland Improvement Workshop with tree/shrub giveaway
- Arranging to provide no till planting services at no charge to the participant
- Setting up a side by side no till/conventional till comparison project
- Non-grant related pot of money set aside for riparian assistance
- Post riparian site evaluation surveys

Some Lessons Learned!!

- Don't just assume that a project will work smoothly, regardless of how it looks on paper!
 - Less grandiose ideas, keep it close to home
- Do greater planning before entering into a project of this nature.
 - Get a better idea of the level of participation that can be expected
 - Thoroughly explore existing resources before entering into a project
- Triple the expected time to administer the project.
- Work closely with all the partners, they make a project like this happen.