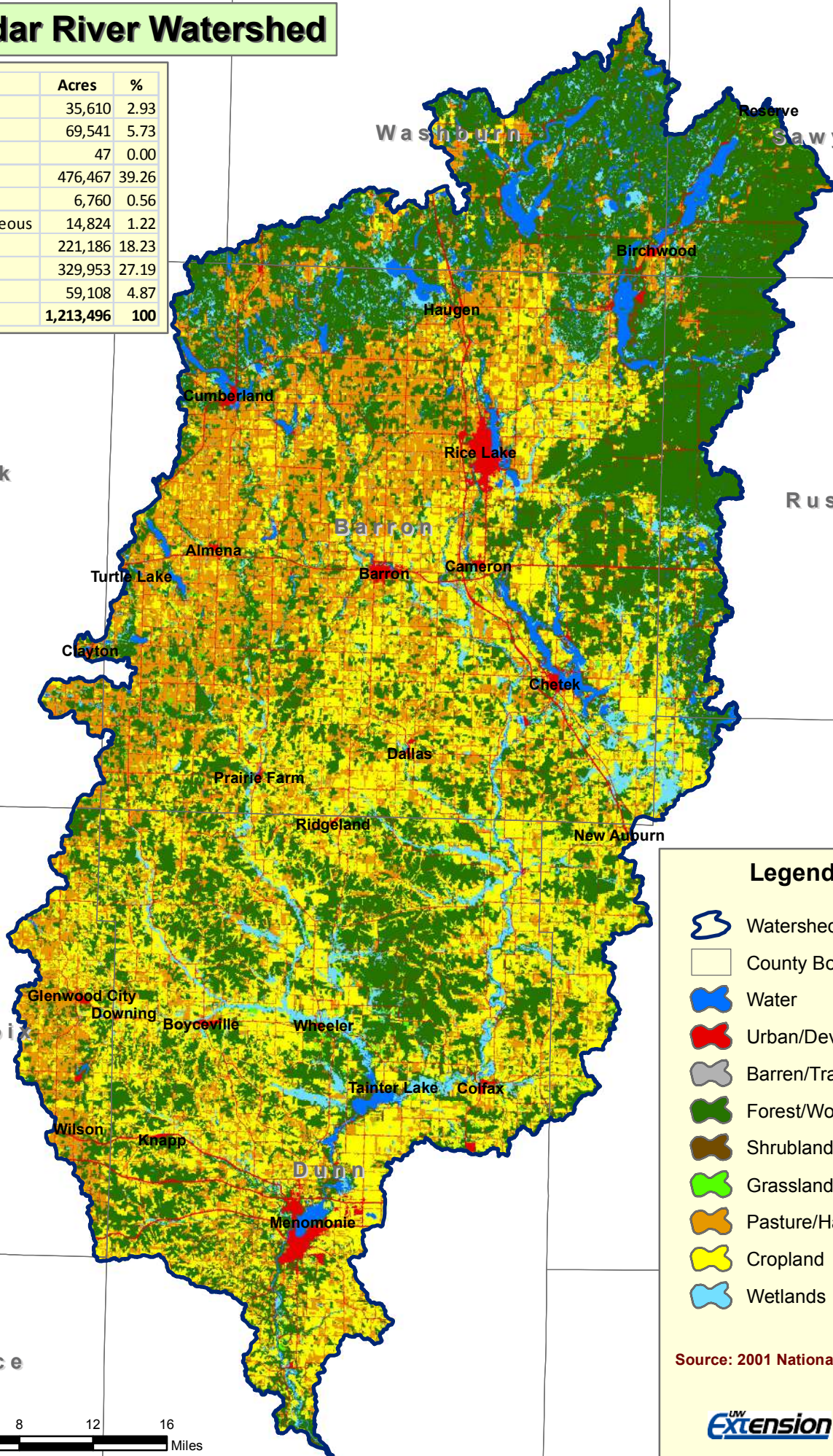


# Red Cedar River Watershed



Land Cover	Acres	%
Water	35,610	2.93
Urban/Developed	69,541	5.73
Barren	47	0.00
Forest/Woodland	476,467	39.26
Shrubland	6,760	0.56
Grassland/Herbaceous	14,824	1.22
Pasture/Hay	221,186	18.23
Cropland	329,953	27.19
Wetlands	59,108	4.87
<b>Total</b>	<b>1,213,496</b>	<b>100</b>



**Legend**

- Watershed Boundary
- County Boundaries
- Water
- Urban/Developed
- Barren/Transitional
- Forest/Woodland
- Shrubland
- Grassland/Herbaceous
- Pasture/Hay
- Cropland
- Wetlands

Source: 2001 National Land Cover Data

**UW Extension** Map Produced by UW Extension February 2009

