

Shade Tree (over 30')
Deciduous
Native
WI State Tree!
Map #59

Sugar Maple

(*Acer saccharum*)
Family: *Aceraceae*



Leaves: simple, 3-5 lobes, lobes are less sharply pointed than Norway Maple, lower surface mostly glabrous; fall - yellow, orange and red—absolutely glorious!

Buds: opposite, shingled, sharp pointed, gray brown; terminal bud in 3's—long center bud with smaller ones on either side.

Stems: smooth, glossy, medium brown .

Bark: young – smooth, gray-brown; older – irregular plates and ridges.

Flowers: not showy, small, greenish yellow.

Fruits: paired samaras, 1 to 1 ½ " long, somewhat horseshoe-shaped.

Habit: upright oval to rounded.

Culture: Full sun to shade. Intolerant of urban conditions and heavy clay soil— sensitive to soil compaction, heat and drought, and to road salt. May develop girdling root on heavy soils, if planted too deep. The dense canopy makes it difficult to grow other plants underneath. Not as susceptible to *Verticillium* wilt as Norway maple.

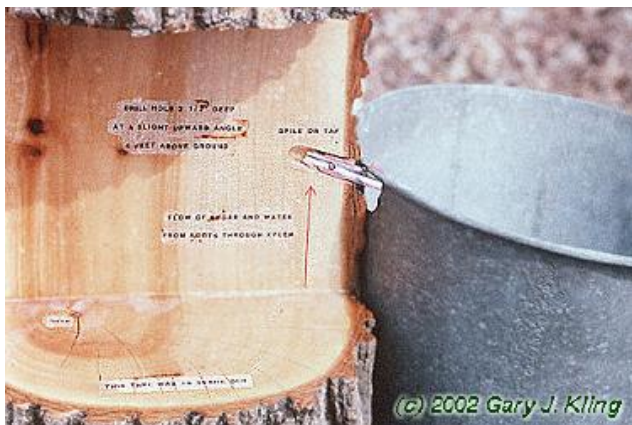
Cultivars: 'Green Mountain' - scorch resistant leathery leaves that turn red-orange in fall. Faster growing than the species; 'Legacy' - thick, heavy foliage that resists scorch. Orange fall color and faster growth than the species.



Fall color o



'Legacy'



Sap is 2—4% sugar. Syrup is boiled down to 65—67%.



'Green Mountain'

Credits: Photos from: www.midwestlandscapeplants.org and various other .edu websites unless noted. Text from: "Manual of Woody Landscape Plants" by Michael Dirr; "Tree Identification Characteristics (abridged)" from the University of Illinois Extension; www.midwestlandscapeplants.org; and misc. other sources. This publication may not be sold except to cover the cost of reproduction when used as part of an educational program of the University of Wisconsin-Extension.