

WHISKERS TO TAILS

A comprehensive look at your feline friend



A day in the life....

*Your cat tracks your every move. But what are THEY doing in the shadows?
Share with us a day in the life of your cat. Please include food they like to eat,
where they answer the call of nature, and the toys they enjoy playing with.*



Fun Facts

Cats can see about six times better than people in starlight.

From tip to tip, cats' whiskers are usually longer than the cat is wide. This keeps cats from entering a hole or pipe that is too small.

Cats have five toes on the front paws and four on the back.

Cats walk on their toes.

A cat's spine is very flexible, so a cat can twist during a fall and land on its feet.

Circle the letters that spell the CAT BREEDS listed below.

X	U	E	R	T	R	A	H	C	X	N	D	G	N	M
X	E	R	H	S	I	N	R	O	C	L	C	B	C	A
G	M	B	R	I	A	H	T	R	O	H	S	M	A	N
T	R	B	K	K	H	F	I	F	S	P	H	Y	N	X
S	E	I	O	T	E	M	H	S	I	A	M	E	S	E
T	P	R	P	E	R	S	I	A	N	U	F	R	U	R
U	A	M	N	A	I	T	P	Y	G	E	S	L	M	K
T	L	A	N	T	W	Y	A	B	M	O	B	K	A	R
A	C	N	T	A	M	C	U	R	L	N	O	T	I	I
N	W	O	R	B	A	N	A	V	A	H	D	P	N	K
V	C	G	A	B	Y	S	S	I	N	I	A	N	E	L
S	B	A	L	I	N	E	S	E	M	R	U	B	C	E
C	I	T	O	X	E	S	E	N	A	V	A	J	O	S
D	V	S	A	R	U	P	A	G	N	I	S	Z	O	D
J	H	X	E	R	N	O	V	E	D	W	N	R	N	Q

- | | | |
|---|--|---|
| Abyssinian
*Am curl
*Am shorthair
*Am wirehair
Balinese
Birman
Bombay
Burmese
Chartreux | Cornish rex
Devon Rex
Egyptian mau
Exotic
Havana brown
Javanese
Korat
La perm
Maine coon | Manx
Persian
Russian blue
Scottish fold
Selkirk rex
Siamese
Singapura
Sphynx |
|---|--|---|

Across Clues

- 4. utilizing food
- 7. internal parasites
- 9. exertion
- 11. fatal disease
- 12. disease protection

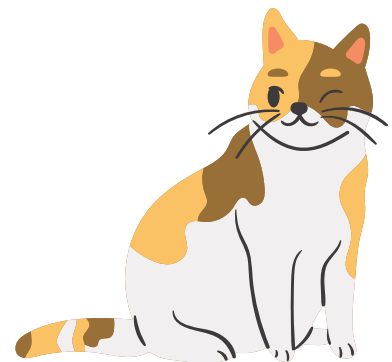
Down Clues

- 1. kill germs
- 2. watery feces
- 3. follow-up immunity
- 4. remove male organs
- 5. plaque
- 6. provided by meat
- 8. illness
- 10. heaviness

↑

Pick one to complete

←



Showmanship

The member should always show calm, quiet control of the cat regardless of what the cat is doing. The leash must be secured on the wrist and kept safely out of the way.

When the member is called, they should hold their cat in a safety carry when approaching the judge's table. In the safety carry, the cat's forelegs are grasped between the thumb and fingers with 1 or 2 fingers between the cat's forelegs. The cat's chest is supported in the palm of the hand. The cat's rump and rear legs are either tucked under the elbow against the member's body or riding on the hip with their opposite hand grasping the nape of the cat's neck or they may hold the cat's rear legs in the same manner as the forelegs.

At the judge's table,

The cat is then posed on the judging table in a sitting or standing position facing the judge. The cat's conformation is shown in this order: head shape (long face or round face); body type (long, moderate, or cobby); coat texture; and tail (or lack of tail).

Long Body: Should be somewhat stretched to accent the body.

Moderate Body: Should be stood up square, neither stretched nor blocked.

Coat Texture: Keeping cat with its side toward the judge, run hand against the lay of the coat and then back down the body to smooth it down.

Tail (or lack of tail).

Match the picture to the showmanship term being shown:



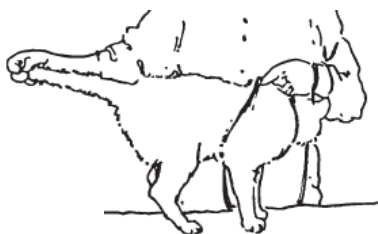
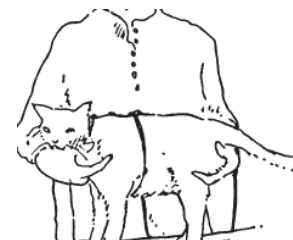
Head shape: Long face

Head shape: Round face

Tail

Long Body

Moderate Body



Interview right meow

Youth in grades 3 - 5: Answer any 5 questions.

Youth in grades 6 - 8: Answer any 10 questions.

Youth in grades 9 - 13: Answer all questions.

1. How old is your cat? _____

2. Is your cat an indoor or outdoor cat? (If both, where does it spend most of its time?)

3. Is your cat fixed, or a whole male or female? Is she pregnant, lactating, or expected to get pregnant?

4. How much does your cat weigh? _____
5. How often do you feed your cat (or do you leave food available all the time)? _____
6. How often do you give your cat fresh water? _____
7. Do you wash out your cat's feed and water bowls? _____
8. Which of the 4 major types of commercial cat food do you give your cat? _____

9. What brand of food do you use? _____
10. Why do you give your cat that type of feed? _____

11. Does your cat hunt and eat wild things? If so, what? _____

12. Do you give your cat anything besides commercial cat food? If so, what? _____
13. Bonus question: How much does it cost per day to feed your cat? _____
14. Do you consider your cat to be in good condition? If not, what changes could you make in its feed to improve its condition? _____