



**Extension**

UNIVERSITY OF WISCONSIN-MADISON  
SHAWANO COUNTY

# **Enrollment Guide 2025-2026**

## *Shawano County 4-H*

### **Welcome!**

#### **So, what is 4-H anyway?**

4-H is the nation’s largest youth development organization.

The 4-H idea is simple: promote positive youth development, leadership skills and community engagement through hands-on learning. In 4-H, we believe in the power of youth. We see that every child has valuable strengths and real influence to improve the world. As America’s largest youth development organization, 4-H empowers nearly six million young people across the U.S. to become confident leaders- building skills that will shape their success for a lifetime.

Besides 4-H projects, you can get involved in events and activities throughout the year. These include style revues, animal judging contests, camps, county and state fairs, community services, tours, educational travel, speeches, and demonstrations. You’ll learn more than “subject matter” as you complete your projects; look forward to gaining “life” skills, such as understanding yourself, communicating better, solving problems, making decisions, and working with others.

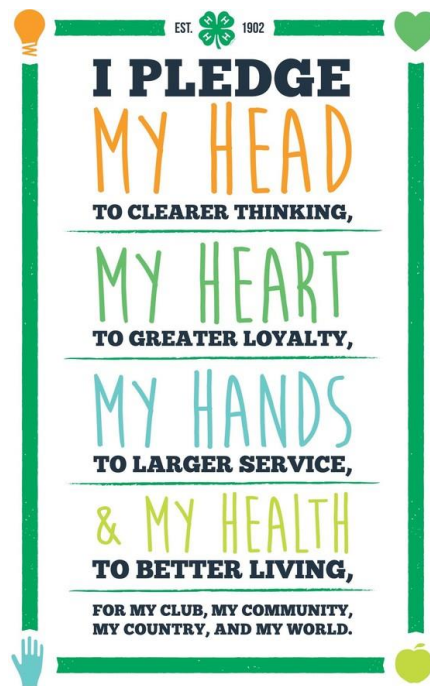
4-H in Wisconsin is sponsored by the Cooperative Extension Service of University of Wisconsin Madison-Extension. Nationally, it is a part of the U.S. Department of Agriculture. Local programs are led by 4-H educators and other county staff of the Cooperative Extension Service. The local county government and the University of Wisconsin work together to support 4-H programs. With their support they ensure that 4-H remains vibrant, inclusive, and impactful for youth development.

We are excited to have you as part of the nation’s largest youth development and empowerment organization here in Shawano County. Have a great 4-H year!

Sincerely,

Megan Suehring  
4-H Positive Youth Development Educator

Tami Goers  
Shawano County Extension Coordinator



# Easy Enrollment for Shawano County 4-H

## **Step 1: Enroll Online**

All new and existing members and volunteers can enroll through: <http://v2.4honline.com>.

## **Step 2: Dues**

### **For Youth Members**

Submit the following at your Community Club meeting:

- County Membership Dues: \$5 per youth (for re-enrollment).
- Club dues vary depending on the club.

### **For Volunteers**

Volunteers do not have dues, but are still asked to re-enroll by November 15<sup>th</sup> in order to keep the most fluent communication line.

Volunteers must successfully:

- Pass a background check.
- Complete necessary training.

## **Step 3: Approval**

Once all of the above steps are completed:

- Your **community club's General Leader** and (later) **Extension staff** will approve your enrollment.
  - You will receive a confirmation email once approved.
  - Be certain to log back into **4HOnline** (<http://v2.4honline.com>) to confirm your selected projects.
- You can update changes to project enrollment, contact information, and the health form throughout the year.

You may enroll in Shawano County 4-H anytime.

In order to be eligible to exhibit at the Shawano County Fair in the Junior Division, you must abide by any dates the Shawano Agriculture Society requires as far as enrollment.

## **Project Selection:**

The first exciting step 4-H youth take in their annual 4-H membership journey is selecting projects. We're excited to share **new resources** to help 4-H members find their sparks — the interests that bring them joy, energy and purpose.

The resources are:

[A fresh Project Guide](#) that groups projects into seven streamlined categories. The new categories not only give youth ideas for exploring each project area, but also conveniently match up with most county fair exhibit categories. There's even a key in the back that shows how the new project areas line up with the previous ones. A new Sparks Roadmap helps youth find projects that align with their interests!

[Three quick videos](#) that give you a tour of the simple changes to the new 4-H Project Guide. That way you can easily explore your sparks and the many exciting projects that help you develop them!

[A Quick Guide](#) for families who — not to brag — already know their way around a 4-H Project Guide. And it's less to print!

Have your best 4-H year ever with these new [Project Guides](#)!

**A few notes:**

- Ask yourself if you have the equipment, money, and time to do the projects that sound interesting. Some projects you do not necessarily need the equipment or animal to participate.
  - o There is no limit to the number of projects a member can select
  - o Cost vary depending on projects selected.
- If you do not find a project that you feel fits your interest, develop it yourself through the Self- Determined project.
- If you decide a project is not for you, notify the Extension Office; they will remove it from your 4-H Online profile.



**Project Meetings and Project Leaders:**

• *Project leaders* are volunteers who help teach youth and guide learning experiences. Some projects have meetings at a countywide or club level while others do not. We are always looking for new volunteers to serve as a project leader! The typical number of meetings held for a project in a year is 4. Most projects host optional meetings at the county level. Sometimes there are required meetings or educational engagements that are required (for example, Livestock.)



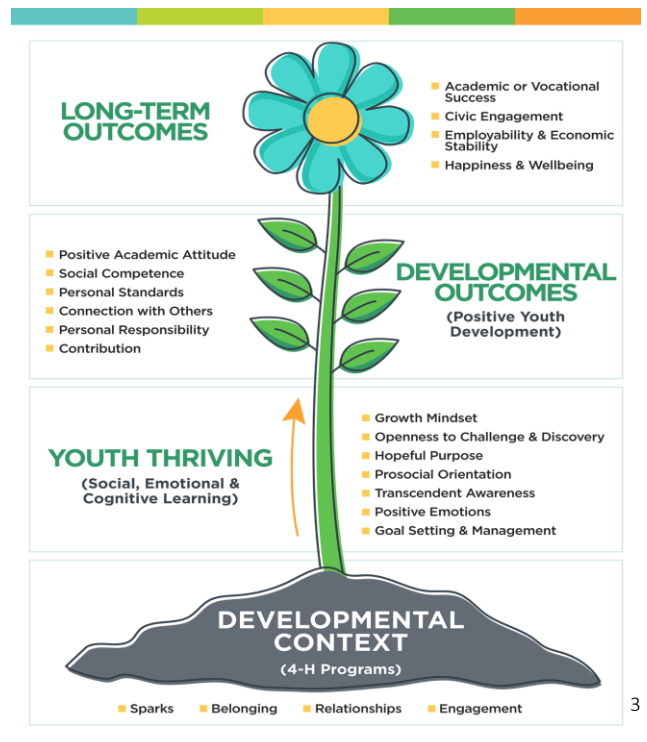
All youth in kindergarten – 2<sup>nd</sup> grade are eligible for the Cloverbud project. Youth in grades 3–13 may enroll in any number of projects. Many projects have more than one level. If you’ve had a lot of experience in an area, you may want to skip the first or beginning level of a project.

What is a fair entry?

\*A fair entry is a display or object designed to show what has been accomplished in a member’s project. A fair entry is not an end in itself, nor does it measure all the learning that takes place from completing a project. Any Junior Fair Exhibitor must abide by the guidelines that the Shawano County Agriculture Society requires, which may be enrolling by a certain date and be considered a “member in good standing.” \*

Where it Started to Where it is Now

4-H evolved from a rich history of clubs that connected rural families to research-based advancements in farming technology from the University of Wisconsin-Extension. From STEM and leadership, to healthy living and the arts, today’s 4-H reflects the diversity and dynamics of Wisconsin communities- suburban, urban, and rural alike. These programs help Wisconsin youth build a healthier and more prosperous future.



To Make The  
Best Better.



**Wisconsin State 4-H Website:**

<https://4h.extension.wisc.edu/>

Check out this site for more information about other 4-H opportunities.

**Shawano County 4-H Website:**

<https://fyi.extension.wisc.edu/shawano4h/>

Find the latest news, including current and past Clover Lines and other important county information, as well as the link to online enrollment.

Shawano County UW-Extension Office      Phone: 715-526-6136  
311 North Main St., Rm 109      Toll-free: 1-866-526-2128  
Shawano, WI 54166      Fax: 715-526-4875

“711 for Wisconsin Relay”

**Shawano County 4-H E-mail Contacts:**

Megan Suehring, 4-H Positive Youth Development Educator: [megan.suehring@wisc.edu](mailto:megan.suehring@wisc.edu)

Tami Goers, Extension Coordinator: [tami.goers@shawanocountywi.gov](mailto:tami.goers@shawanocountywi.gov)

*An AA/EEO employer, University of Wisconsin-Extension provides equal opportunities in employment and programming, including Title VI, Title IX and ADA requirements.*

*La Universidad de Wisconsin-Extensión, un empleador con igualdad de oportunidades y acción afirmativa (EEO/AA), proporciona igualdad de oportunidades en empleo y programas, incluyendo los requisitos del Título VI, Título IX, y de la Ley para Americanos con Discapacidades (ADA).*