



**Extension**

UNIVERSITY OF WISCONSIN-MADISON

**Upham Woods Outdoor Learning Center**

N194 County Road N, Wisconsin Dells, WI 53965

(608) 254-6461 • <https://fyi.extension.wisc.edu/uphamwoods/>



## Be part of Upham Woods Backyard BioBlitz with iNaturalist

### How to participate in Upham Woods Backyard BioBlitz?

Download the iNaturalist app onto your device. Make an account and add observations to the Upham Woods Backyard BioBlitz project. Fill out this survey to count your explorations toward the 10k Conservation Challenge! To learn more about the challenge take a look at the Upham Woods website.

Survey: [https://uwmadison.co1.qualtrics.com/jfe/form/SV\\_cPepiSpnSDzhPSZ](https://uwmadison.co1.qualtrics.com/jfe/form/SV_cPepiSpnSDzhPSZ)

Upham Website: <https://fyi.extension.wisc.edu/uphamwoods/programs/conservation-program/>

### What is a BioBlitz?

A BioBlitz is the gathering of different species in one area. The goals of a BioBlitz are to gain a better understanding of the biodiversity of an area and to get people outside interacting with their local environment.

### What is Biodiversity?

Biodiversity is variety of life in a particular ecosystem. A high biodiversity brings stability and helps maintain ecosystem services. Ecosystem services include clean water, clean air, and healthy soil.

---

## How to use iNaturalist

Below are steps on how to use iNaturalist. Videos are also available on their website here:

<https://www.inaturalist.org/pages/video+tutorials>

### Before you add observations, join Upham Woods Backyard BioBlitz!

iPhone with iOS app:

1. Tap "More" on the bottom row, then tap Projects
2. Swipe down on the Projects page then search for Upham Woods
3. Select Upham Woods Backyard BioBlitz
4. Tap Join

Android app:

1. Tap on Projects in the side menu.
2. Tap on magnifying glass icon then search for Upham Woods
3. Select Upham Woods Backyard BioBlitz
4. Tap Join

The University of Wisconsin-Madison does not discriminate in its employment practices and programs and activities on a variety of bases including but not limited to: age, color, disability, national origin, race, or sex. For information on all covered bases, the names of the Title IX and Americans with Disabilities Act Coordinators, and the processes for how to file a complaint alleging discrimination, please contact the [Office of Compliance](#), 361 Bascom Hall, 500 Lincoln Drive, Madison WI 53706, Voice 608-265-6018, (relay calls accepted);

Email: [uwcomplianceoffice@wisc.edu](mailto:uwcomplianceoffice@wisc.edu).



Extension

UNIVERSITY OF WISCONSIN-MADISON

Upham Woods Outdoor Learning Center

N194 County Road N, Wisconsin Dells, WI 53965

(608) 254-6461 • <https://fyi.extension.wisc.edu/uphamwoods/>



## What Are Observations?

An observation records an encounter with an individual organism at a particular time and location. This includes encounters with signs of organisms like tracks, nests, or things that just died. When you make an observation, you'll record:

### Who you are

You'll need to make an **iNaturalist account** and please only post your own personal observations

### Where you saw it

Record both the coordinates of the encounter as well as their accuracy. You can obscure the location from the public

### What you saw

Choose a group of organisms like **butterflies** or better yet a specific organism like the **Monarch butterfly**. If you provide evidence you can leave this blank and the **community can help**

### When you saw it

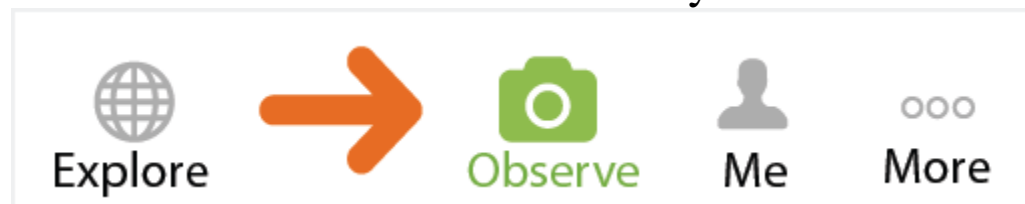
Record the date of your encounter, not the date you post it to iNaturalist

### Evidence of what you saw

By including evidence like a **photo or sound**, the community can help add, improve, or confirm the identification of the organism you encountered. Help the community by taking clear well framed photos, by including multiple photos from different angles

Your observations don't need to include all of these parts, but they do in order to become *research quality observations for science*. Remember, you should make separate observations for each separate organism you encounter. If you observed something that is not wild, like a garden plant or a lion in the zoo, make sure to mark it as captive/cultivated to prevent it from becoming research quality.

## How to Make an Observation with your iPhone



- Tap **observe**.

The University of Wisconsin-Madison does not discriminate in its employment practices and programs and activities on a variety of bases including but not limited to: age, color, disability, national origin, race, or sex. For information on all covered bases, the names of the Title IX and Americans with Disabilities Act Coordinators, and the processes for how to file a complaint alleging discrimination, please contact the [Office of Compliance](#), 361 Bascom Hall, 500 Lincoln Drive, Madison WI 53706, Voice 608-265-6018, (relay calls accepted);

Email: [uwcomplianceoffice@wisc.edu](mailto:uwcomplianceoffice@wisc.edu).



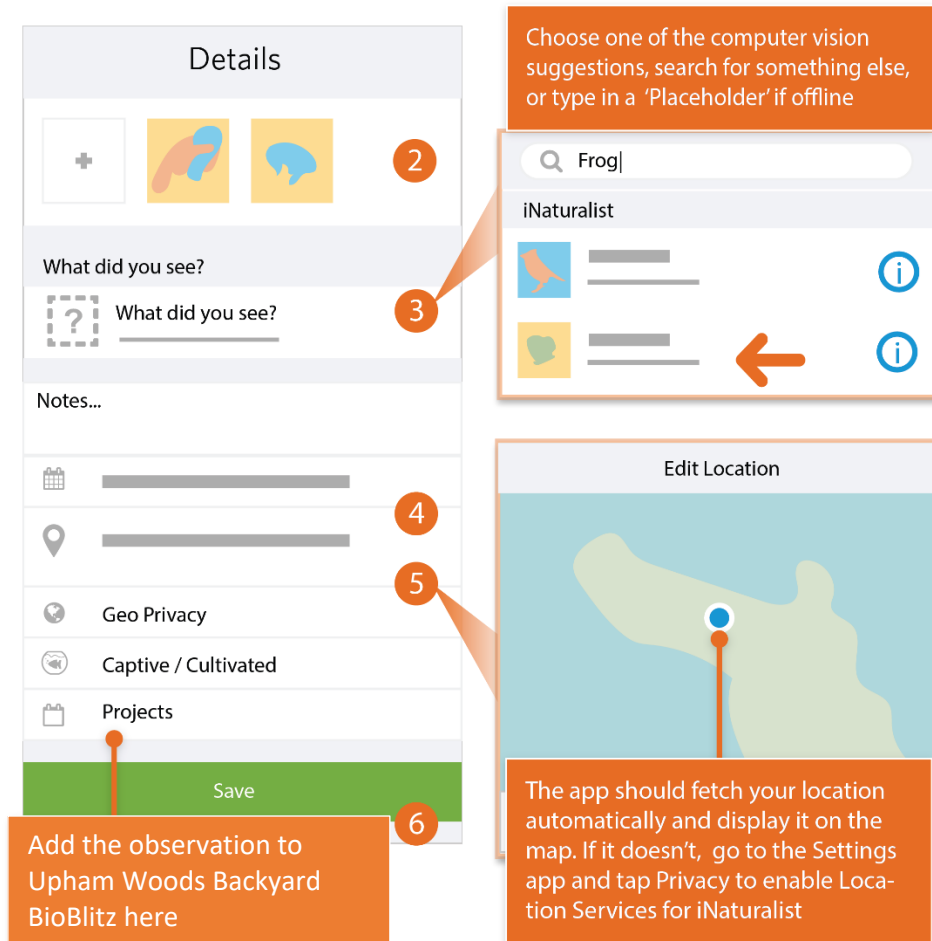
Extension

UNIVERSITY OF WISCONSIN-MADISON

Upham Woods Outdoor Learning Center

N194 County Road N, Wisconsin Dells, WI 53965

(608) 254-6461 • <https://fyi.extension.wisc.edu/uphamwoods/>



- Add one or more photos as **evidence**.
- Choose **what** you saw.
- **When** you saw it should be added automatically.
- **Where** you saw it should be added automatically. If it doesn't, check Privacy in the Settings app.
- Click on projects and **add the Upham Woods Backyard BioBlitz**
- **Save** your observation.

The University of Wisconsin–Madison does not discriminate in its employment practices and programs and activities on a variety of bases including but not limited to: age, color, disability, national origin, race, or sex. For information on all covered bases, the names of the Title IX and Americans with Disabilities Act Coordinators, and the processes for how to file a complaint alleging discrimination, please contact the [Office of Compliance](#), 361 Bascom Hall, 500 Lincoln Drive, Madison WI 53706, Voice 608-265-6018, (relay calls accepted);

Email: [uwcomplianceoffice@wisc.edu](mailto:uwcomplianceoffice@wisc.edu).



- **Upload** to share with the community. This should happen automatically. If it doesn't, tap the Upload button. You can turn off automatic upload from the app settings from the Me tab.

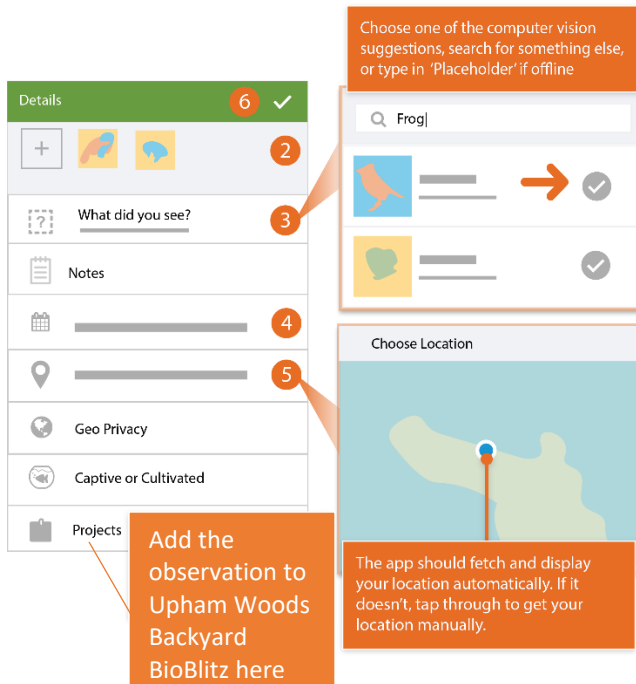


- Check back for **activity** on your observation from the community or be notified by email to the address in your account settings.

## How to Make an Observation with your Android



- Tap the **observe** button from the My Observations tab.



- Add one or more photos as **evidence**.
- Choose **what** you saw.
- **When** you saw it should be added automatically.



Extension

UNIVERSITY OF WISCONSIN-MADISON

Upham Woods Outdoor Learning Center

N194 County Road N, Wisconsin Dells, WI 53965

(608) 254-6461 • <https://fyi.extension.wisc.edu/uphamwoods/>



- **Where** you saw it should be added automatically. If this doesn't happen, check app permissions in the Settings app.
- Click on projects and add the Upham Woods Backyard BioBlitz
- **Save** your observation.



- **Sync** to share with the community. This should happen automatically. If it doesn't, tap the button. You can turn off auto upload from the Settings tab.



- Check back for **activity** on your observation from the community or be notified by email to the address in your account settings.

### **This could be part of your career!**

There are many different career opportunities in natural resources including conservation warden, land steward, wildlife biologist, and much more.

The University of Wisconsin-Madison does not discriminate in its employment practices and programs and activities on a variety of bases including but not limited to: age, color, disability, national origin, race, or sex. For information on all covered bases, the names of the Title IX and Americans with Disabilities Act Coordinators, and the processes for how to file a complaint alleging discrimination, please contact the [Office of Compliance](#), 361 Bascom Hall, 500 Lincoln Drive, Madison WI 53706, Voice 608-265-6018, (relay calls accepted);

Email: [uwcomplianceoffice@wisc.edu](mailto:uwcomplianceoffice@wisc.edu).