

# 2019 Wisconsin 4-H Explores For Space Camp



**Thursday, April 25 - Monday, April 29, 2019**  
**Huntsville, Alabama**



**UW**  
**Extension**  
University of Wisconsin-Extension

University of Wisconsin, U.S. Department of Agriculture and Wisconsin counties cooperating. UW-Extension provides equal opportunities in employment and programming including Title IX, Title VI, and ADA.





# Wisconsin 4-H Delegate Guide For 2019 Space Camp

---

**THURSDAY, APRIL 25 - MONDAY, APRIL 29, 2019**  
**HUNTSVILLE, ALABAMA**

Welcome to Space Camp! With a number of 2019 Space Camp Goals in sight, Wisconsin 4-H plans to conquer them all.

Space Camp is designed to:

- provide opportunities for young people to belong, practice mastery, generosity and independence
- encourage an interest in science and math
- promote teamwork, decision making, and problem solving
- broaden appreciation and practice respect for self and others
- And, of course, have fun!

Our goals will be accomplished through a variety of exciting and educational experiences. One of these experiences takes us behind the scenes at the U.S. Space and Rocket Center, and we may possibly have the chance to meet NASA staff and representatives. In addition, our goals will be achieved with hands-on team activities that increase individual interest in aerospace and science and activities that encourage new and lasting friendships. An enthusiastic collegiate staff working daily with the youth and integrated fun are the final necessities in making 2019 Space Camp a great success!

## **ADVANCED PREPARATION**

---

In preparation for your out-of-this-world experience, you will need to do a little studying in advance. Before the program, look for interesting facts related to rocketry, space travel, astronomy, telescopes, physics, etc. and write **at least two** individual questions on separate 3"x 5" cards with the answers written on the reverse sides. You will give them to your Adult Advisors when you board the bus, and then be prepared for some great trivia with your fellow delegates.

## **MANDATORY ORIENTATION**

---

**Orientation is REQUIRED!** You and a parent or guardian need to plan on participating in the orientation between **1:30-4:00 p.m. on Sunday, March 31**. You will have the option of participating in the orientation either **in person or online through Zoom**. The in person orientation will take place at the **Comfort Inn & Suites, 5025 County Rd V, DeForest, WI 53532**. It will be a great opportunity to meet other Space Camp youth, adult advisors, camp counselors, and State 4-H Staff while having fun learning about the U.S. Space Program. Part (or all) of the orientation will be streamed online and through telephone by Zoom. More information to connect to the Zoom will be sent out closer to the orientation date through email. The orientation will also be recorded for those unable to connect or attend the day of.

# 2019 Program Dates to Remember

---

## DELEGATES, ADVISORS AND CAMP COUNSELORS

Wed., Jan. 10, 2019	<b>Deadline for 4HOnline Registration</b>
Thurs., Feb. 1	<b>Last Day to Cancel without Financial Penalty (requests must be in writing) Visit your 4HOnline Enrollment to update your Health Form</b>
Sun., Mar 31	<b>Participant Orientation Gathering at Comfort Inn &amp; Suites, DeForest (1:30–4 p.m.), In person or online through Zoom.</b> 5025 Co Hwy V, DeForest, WI 53532 for hands-on fun experiences, learning about the U.S. Space Program, participant orientation, and meeting others who will travel with you. Will be live streamed through Zoom for those unable to attend in person. Connection information will be sent at a later date. Recording will also be available.
Mon., April 1	<b>County Deadline for Payments</b> Check with your county for local payment procedures
Early April	<b>Letter with Final Rosters and Emergency Numbers</b>
Thurs., Apr. 25 - Mon., Apr. 29	<b>Wisconsin 4-H Space Camp Pathfinder Program</b>

## WI 4-H CAMP COUNSELORS ONLY

Nov. 22, 2018	<b>Space Camp Counselor Application due to county 4-H office.</b>
Nov 28-Dec 7, 2018	<b>Space Camp Counselor Telephone Interviews (as stated on application)</b>
Mon., Jan. 28, 2019	<b>Space Camp Counselor Teleconference #1 from (7:00 – 8:30pm)</b> Zoom connection information will be emailed.
Sat., Feb. 16	<b>Space Camp Counselor Training In person</b> Pyle Center, Madison WI. 10am-4pm. Lunch provided.
Sat.-Sun., Mar 30-31	<b>Mandatory Space Camp Counselor Training (10:00 am Sat.– 4:00 pm, Sun.)</b> at Comfort Inn & Suites, 5025 Co Hwy V, DeForest, WI 53532

## ADVISORS ONLY

Thurs., Feb. 15, 2019	<b>Applications must be received by the State 4-H Office by 4:30 p.m.</b>
Sat.-Sun., Mar. 30-31	<b>Mandatory Orientation and Training (10:00 am Sat.– 4:00 pm, Sun.)</b> at Comfort Inn & Suites, 5025 Co Hwy V, DeForest, WI 53532

# Program Details

---

## **COST**

The 2019 Space Camp Program includes round-trip coach transportation from Wisconsin to Huntsville, Alabama; registration, lodging, and meals at U.S. Space & Rocket Center Huntsville, AL; meals during travel; and one-night hotel lodging. A letter has been sent to your county extension office with an invoice. Because of support from the WI 4-H Foundation, the cost for participants is approximately \$625. County 4-H delegation payments are due April 1; checks should be made payable to UW Extension. Contact your county 4-H office for payment procedures.

## **CANCELLATION POLICY**

The program is filled on a first-come, first-served basis. No financial penalty will be incurred if written notification of cancellation is **received** in the WI state 4-H office in Madison by **February 1, 2019**. **No cancellations can be accepted after 4:30 CST February 1 without penalty of full registration fee due to national deadlines.** In case of emergency or other cancellation questions after February 1, 2019, please contact the WI 4-H Youth Development Office immediately. An alternate might be available to take your place. Same gender substitutions may be made until March 10.

## **HEALTH FORMS**

Please complete the health form in your 4HOnline account **by February 1**. It will travel with your Lead Advisor to Space Camp. Just before travel, **complete the health update form in this guide and bring it to the bus** boarding site to give to the your bus's Health Coordinator.

## **EXPECTATION FORMS**

The Expectation Forms you submitted in 4HOnline will be shared with your Adult Advisors. For your reference, a copy of the Expectation Form can be found in this guide.

## **TRAVEL ARRANGEMENTS**

You will travel by coach to Huntsville. There are movies and a restroom onboard. Enclosed are detailed maps for parents/guardians to find the boarding/return sites. All sites are in public places with large parking lots. The driver will park **near the side of a parking lot, away from the entrance of a business** in order to avoid disruption of normal activities.

## **FOOD AND SNACKS**

There will be no lunch stops on the road on Thursday, so please pack a bag lunch. You may wish to bring **healthy** snacks for the coach ride; if you do, please bring enough to share with your seatmate on the bus. Suggested snack items are popcorn, raisins, granola snacks, pretzels, beef sticks, oatmeal-raisin cookies, graham crackers, oranges, etc. It is recommended that you bring a water bottle that closes tightly and is labeled with your name for the long trip. **(Please do not bring items containing peanuts or nuts due to passengers with allergies!)**

## **FUN**

Feel free to bring cards or travel games for the trip. You may bring a smart phone but you will also have a blast talking with new friends from around Wisconsin. Be sure to label all personal items with your name. Adult Advisors will provide videos and Counselors will organize fun activities. If you bring a handheld device and want to have sound, remember that you must have earphones or have the game on mute so as not to disturb other passengers.

## MEDICATIONS

WI 4-H Adult Advisors to Space Camp will serve as "First Aid" official(s) and will collect all medications including controlled substances, except asthma inhalers and other immediate need items such as epi-pens, when you board the bus. All medications must be in their original containers and placed all together in a plastic zip-lock bag clearly labeled with your name. The designated Adult Advisors will discuss needs with each delegate who has medications. **Asthma inhalers may be retained by delegates** but must be reported to the Adult Advisor.

## DEPARTURE

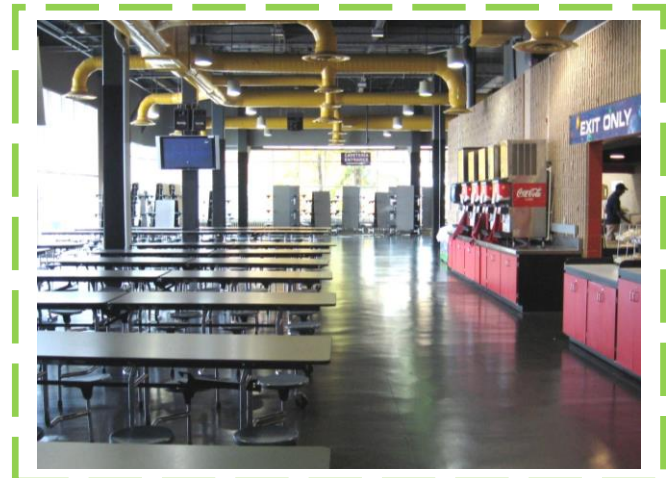
Plan to eat breakfast before you leave home or bring a sack meal for Thursday morning. The coach will leave on time so plan to arrive early! The driver needs to maintain a tight schedule and cannot wait for individuals. If you must cancel or arrive at the last minute due to an emergency, call an adult advisor. The advisors' names will be announced after the mid-February Adult Advisor selections.

## LIVING ENVIRONMENT

Huntsville's Space Camp houses trainees in two separate sleeping facilities: Habitat 1 has seven or eight-person dorm rooms; Habitat 2 groups people in sleep bays with 20-40 bunk beds. Space Camp personnel will make bunk assignments and we won't know ahead of time which Habitat you'll occupy. A certain amount of noise is to be expected, so bring ear-plugs if you anticipate problems sleeping because of noise. Females and males are housed on separate floors. Restrooms are located throughout the complex with access to sinks, private shower stalls and private toilets.

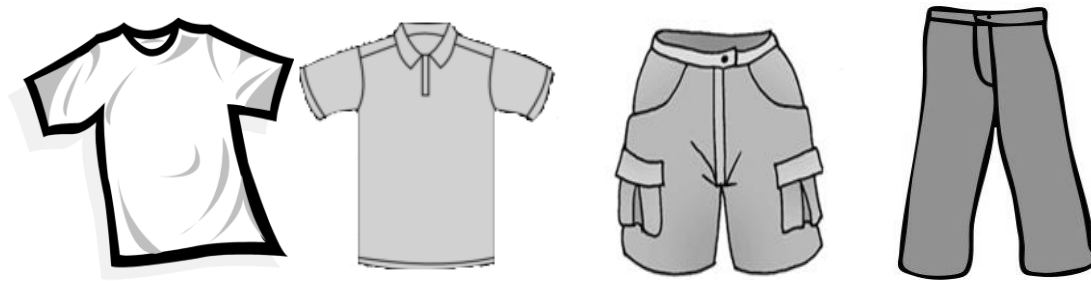
## MEALS AT SPACE CAMP

Breakfast, lunch and dinner are provided in a common dining area from noon on Friday through lunch on Sunday. At each meal a variety of food is offered to appeal to different preferences. Snacks and soft drinks are also available at various sites within the facility at the trainee's expense. A sample menu for breakfast might include cold cereal, milk, juice, pancakes, biscuit & sausage, scrambled eggs & hash browns; for lunch: popcorn shrimp, spaghetti casserole, vegetarian stuffed peppers, honey glazed carrots, green bean casserole, and assorted desserts; for dinner: vegetarian or meat lasagna, broccoli with cheese sauce, baby carrots and assorted desserts.



# Dress Code

---



## RECOMMEND

### Travel Attire

T-shirts or polos and sweatshirts or sweaters with sweatpants and warm socks are ideal. Comfortable layers are recommended because of variation in temperatures onboard the bus.

### Camp Attire

Longer shorts or jeans that are in good condition, T-shirts, and appropriate shirts. Closed-toed shoes are required for the simulators. Comfortable shoes are recommended for walking.

## RESTRICTED

No ripped, faded, or cut-off jeans or short shorts. No t-shirts or tops with offensive slogans, beer/tobacco ads or other messages in bad taste. No spandex or bare midriff tops, ripped t-shirts, or similar items. No spaghetti strap tops (sleeveless shirts are ok). No underwear may show (bras under extra narrow straps or briefs above waistbands.)

# Space Camp Orientation

---

## SPACE CAMP IN PERSON AND ZOOM ORIENTATION

1:30-4:30p.m. Sunday, March 31st

Orientation will take place at the Comfort Inn & Suites, 5025 County Rd V, DeForest, WI 53532. You may participate in person or online through Zoom. Zoom connections can be done via computer, smart phone app, or phone call. It is recommended you connect via a computer or by the smart phone app for video but not required. Connection information will be emailed at a later date. The orientation will be recorded if you are unable to attend or listen.

### Agenda

- I. Space Camp
  - A. Goals & purpose
  - B. What to expect
- II. Wisconsin Delegation
  - A. Selection
  - B. Responsibilities
- III. Costs
  - A. Registration Costs
  - B. Total costs (amount, what's included)
  - C. Local support
- IV. Adult Advisors
  - A. Introductions
  - B. Role of Lead Advisor
  - C. Role of Adult Advisors
  - D. Code of Conduct & Discipline
- V. Travel Details
  - A. Planning ahead: travel to boarding sites, emergency numbers, sack meals, health update form
  - B. Coach Travel
  - C. Stop in Mt. Vernon, IL (overnight)
  - D. Snack item for group
  - E. Arrival in Huntsville, AL
  - F. Returning home
- VI. On-site details
  - A. U.S. Space and Rocket Center
  - B. Dress Code
  - C. Meals
  - D. Spending money
- VII. Program
- IX. Questions & Discussion



# What to Bring to Space Camp

---

## ONE CARRY-ON BAG

In your carry-on bag (such as a back pack) **you may want to bring:** breakfast items for Thursday morning, **a sack lunch for Thursday noon**, a full reusable water bottle, snacks for the bus (*no peanuts or nuts, please, due to passengers with allergies!*), money, change for snack machines, camera, a notebook, jacket, cap or sunglasses, cards or handheld games, portable music devices, and cell phone. Please label your belongings with your name in the event that they are misplaced. You may keep electronics (besides cameras) in your locker, as they will not be allowed during camp. You may carry your cell phone with you to take pictures but may be asked to put it away if you are using it for other things.

## MEDICATIONS

Prescriptions must be in their original containers and will be turned in when you board the bus. Over-the-counter medication, epi-pens, and inhalers must be on board with you in your carry-on bag. Each delegate is responsible for bringing their own common over-the-counter medications such as antacid, anti-diarrhea medication, etc. as you will only have access to the nurse's station in a medical emergency. The Health Coordinator will dispense only Acetaminophen, Benadryl, Hydrocortisone, and Ibuprofen with expressed written permission from a parent/guardian. Adult Advisors may not carry or dispense any other over-the-counter medications.

## TRIVIA QUESTIONS

Bring two 3"x5" cards to the boarding site, each with a question about aerospace, engineering, or other space-related sciences on the front and the answer to the question on the back (see "Advance Preparation Required!"). Your Adult Advisors or WI 4-H Space Camp Counselors will collect them on the bus.

## ONE DUFFEL BAG

Your one duffel bag will be packed in the luggage cargo bay underneath the coach. You will not be able to retrieve items from the cargo bay during travel. Duffel bags are recommended over suitcases because they can be easily stuffed into the provided lockers at camp. Lockers are approximately 18" tall x 24" wide x 30" deep. In your bag, **you may want to include:** padlock for your locker, toiletries, a towel, sleepwear, shower flip flops, clothing for each day, sealable plastic bags for laundry, socks, closed toed shoes, and an umbrella.

## LINENS

Bring a pillow, twin-sized sheet set, and blanket **or** a sleeping bag. Please label these items with your name.

## VALUABLES AND SNACKS

Please do not bring valuable jewelry or electronics. Also, food is not allowed to be brought to camp. Please keep your snacks for the bus ride.

## HEALTH UPDATE/CHANGES

Complete and bring the Health Update/Changes Form from the back of this guide to give to the Health Coordinator at check-in before boarding the bus.

# Wisconsin 4-H

## Space Camp Itinerary

APRIL 25-29, 2019



---

### THURS., APR. 25

- 8:00 a.m. Coach departs Eau Claire for Illinois. **Bring sack lunch to eat on bus!!!**
- 8:00 Coach departs Wausau for Illinois. **Bring sack lunch to eat on bus!!!**
- 10:00 Coach departs Milwaukee for Mt Vernon, IL. **Bring sack lunch to eat on bus!!!**
- 10:30 2 Coaches depart Madison and travel together to MT. Vernon, IL. **Bring sack lunch to eat on bus!!!**
- 5:00 p.m. Begin arriving at Ryan's Restaurant/Hotels for Dinner/Check in. Dinner and games until lights out.
- 8:30 Lights out!

### FRI., APR. 26

- 5:00 a.m. Wake-up Call at 5:00; Get ready for the day.  
Breakfast. Load bus.
- 6:00 Depart for Huntsville, AL.
- 12:15 Arrive at U.S. Space and Rocket Center. Unload buses.
- 12:30 Check-In. Get a wristband & room assignment. Drop off bags. Please NOTE...no time to shower!
- 12:45 Lunch on Site.
- 1:30 p.m. Program Begins; Be on time!
- 5:30 Dinner at Space Camp

### SAT., APR. 27

- All day Space Camp Program Continues. Breakfast, Lunch, and Dinner on site.

### SUN., APR. 28

- 7:00 a.m. Load Luggage on Bus.
- Morning Breakfast. Program Continues.
- 10:30 Graduation. Clean Habitats. Inspection.
- 11:30 Lunch
- 12:30 p.m. Free Time; to visit museum, gift shop, or simulators with team members.
- 2:00 Reflection Activities at US Space and Rocket Center
- 4:00 Depart Huntsville, AL
- 6:00 Arrive at Golden Corral, Hermitage and Nashville, TN for Dinner. Restroom and exercise break.
- 7:30 Depart Restaurant  
Sleep Overnight on Bus  
Fuel break and Driver Change (1 hr.)

### MON., APR. 29

- 5:45 a.m. Estimated arrival at Madison drop-off site.
- 7:00 Estimated arrival at Milwaukee drop-off site.
- 8:00 Estimated arrival at Wausau drop-off site.
- 8:15 Estimated arrival at Eau Claire drop-off site.

# Spending Money

---

You will need to bring extra money for snacks and personal souvenirs. Plan to purchase beverages and snacks (totaling about \$20). Additional change may be needed for telephone calls or snacks. There will be time to visit the Space Camp gift shop, which features items such as T-shirts, pens, and key-chains costing less than \$1 up to over \$90 for a jumpsuit. Travelers' checks are accepted, but the youth must sign for them at the home bank so that the signatures match at the gift shop. If you wish to purchase a jumpsuit but prefer not to bring travelers' checks, pre-loaded debit cards are accepted. Personal checks and credit cards will not be accepted from youth. Alternatively, items can also be purchased from the Space Camp website: <http://www.spacecampstore.com/>.

## SAMPLE BUDGET

Delegates, please note: these prices are estimates; cost of items may vary.

---

### THURSDAY

Beverages or snacks	\$10.00
Bring a sack lunch!	
Dinner provided	

### FRIDAY, SATURDAY, SUNDAY

All meals provided	
*Souvenirs	\$10.00 - \$90.00

### MONDAY

**Beverages, snacks, or emergency	\$10.00
-----------------------------------	---------

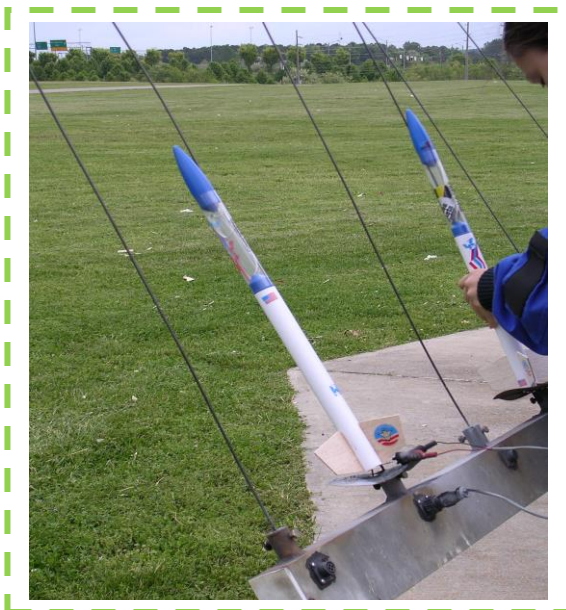
\*A gift shop opportunity will be available, but the date and time will depend on team schedule. Please plan to bring \$10-\$90, depending on your preference, for souvenirs.

\*\*Breakfast bars and juice provided for Wausau and Eau Claire travelers on Monday morning.

# Sample Pathfinder Program

## Day One: Friday

Groups	Columbia	Charlie Brown	Gumdrop
12:00 p.m.	Registration	Registration	Registration
12:30	Orientation	Orientation	Orientation
1:00	Rocket Park	Mercury	Pathfinder
1:30	Mercury	Pathfinder	Rocket Park
2:00	Photo	Photo	Photo
2:30	Pathfinder	Rocket Park	Indoor Sims
3:30	Shuttle Orientation	Shuttle Orientation	Shuttle Orientation
4:00			Mercury
4:30		5DF Simulator	Dinner
5:00	Rocket Construction	Team Time	
5:30	Dinner	Dinner	Columbia Training
6:30	5DF Simulator	Columbia Training	
7:00		Mission Patch	Rocket Construction
7:30	Columbia Training		Mission Patch
8:00	Team Time		
8:30	Mission Patch	Rocket Construction	5DF Simulator
9:30	IMAX Movie	IMAX Movie	IMAX Movie



## Day Two: Saturday

Groups	Columbia	Charlie Brown	Gumdrop
7:00 a.m.	Wake-up Prep	Wake-up Prep	Wake-up Prep
7:30	Rocket Prep	Rocket Prep	Rocket Prep
8:00	Breakfast	Breakfast	Breakfast
8:30	Gemini	(C) Script	
9:00	Outpost		Rocket Launch
9:30		Multi-Axis Simulator	(C) Script
10:00	Rocket Launch		
10:30	Indoor Sims	Museum Simulators	Discovery Training
11:30	Multi-Axis Simulator	Discovery Training	Museum Simulators
12:00 p.m.		Outpost	
12:30	Discovery Training		Multi-Axis Simulator
1:00	Apollo	Rocket Launch	Lunch
1:30	Lunch	Lunch	Gemini
2:30	Space Life	Space Life	Space Life
3:00		Gemini	Outpost
3:30	1/6 Chair Simulator	Indoor Sims	Team Time
4:30	Museum Simulators	Museum Hunt	Columbia Mission
5:00	(C) Script		
5:30	Dinner	Columbia Mission	1/6 Chair Simulator
6:00		Dinner	Dinner
6:30	Columbia Mission	Mission Patch	(D) Script
7:00			Apollo
7:30	MMU Simulator	1/6 Chair Simulator	Mission Patch
8:00	(D) Script	Apollo	
8:30	Skylab/MIR	(D) Script	Discovery Mission
9:30	IMAX Movie	IMAX Movie	IMAX Movie

## Day Three: Sunday

Groups	Columbia	Charlie Brown	Gumdrop
7:00 a.m.	Wake-up Prep	Wake-up Prep	Wake-up Prep
7:30	Breakfast	Breakfast	Breakfast
8:30	Space Bowl	Space Bowl	MMU Simulator
9:00	EVAL		
9:30	Mission Patch	Discovery Mission	Museum Hunt
10:30	Discovery Mission	MMJ Simulator	Space Bowl
11:00		EVAL	EVAL
11:30	Museum Hunt	Skylab/MIR	Skylab/MIR
12:00 p.m.	Grad Prep	Grad Prep	Grad Prep
12:30	Graduation	Graduation	Graduation

# Interesting Sites

---

Prior to attending 2019 Space Camp, consider researching the following websites or visiting a few of these locations. Not only do these sites offer a great deal of space-related resources that may better prepare you for your experience at Space Camp, but they also provide you with learning opportunities within your home state of Wisconsin.

## ***UW Space Place, 2300 South Park St., Madison WI 53715-2143***

Space Place family workshops are offered every Saturday at 10 a.m. for children ages 6-10 and their parents. The workshops are free and open to the public. No registration is required for any of the workshops but attendance is LIMITED to the first 50 people. Telephone (608) 262-4779, [www.spaceplace.wisc.edu](http://www.spaceplace.wisc.edu)

## ***Washburn Observatory, 1401 Observatory Dr. Madison***

Operated by the UW-Madison Department of Astronomy at the summit of UW-Madison's Observatory Hill, historic Washburn Observatory, is open for free public viewing for about two hours starting at 7:30 p.m. (Jan. – March; Nov-Dec) and starting at 9 p.m. (April and May) on the first and third Wednesdays (and in the summer every Wednesday) of each month if the sky is at least 75% clear. Contact [washburn@astro.wisc.edu](mailto:washburn@astro.wisc.edu) with further questions or [http://www.astro.wisc.edu/washburn/washburn\\_home.html](http://www.astro.wisc.edu/washburn/washburn_home.html).

## ***James Madison Memorial High School Planetarium, 201 S. Gammon Rd., Madison 53717***

Open to the public the 3<sup>rd</sup> Tuesday and Wednesday evening of the month, October through May, the show times vary. The 64 seat auditorium fills for each program. Come early, seating is limited. Ticket sales start at 6:00 p.m. for a fee of \$2.50 per person. Program topics vary monthly. Telephone (608) 663-6102; visit <http://planetariumweb.madison.k12.wi.us/>.

## ***Manfred Olson Planetarium, 1900 E. Kenwood Blvd., Milwaukee WI 53201***

Located at the UW-Milwaukee campus between the river & the lake. Public programs are on Friday evenings at 7:00 p.m. for \$3; topics change every four to six weeks. Visit the Olsen Planetarium on select Wednesday's from 12:15p.m.-12:45p.m for a **FREE** 30-minute show. In April, check out spring stargazing opportunities and learn about constellation identification, how to find the North Star and see how the sky changes throughout the night. Follow Project Jason kids and the International Space Station. Visit <https://uwm.edu/planetarium/>. Telephone (414) 229-4961. Visit <http://heavens-above.com> for a neat link to Germany's Space Station.

## ***Adler Planetarium & Astronomy Museum, 1300 S. Lakeshore Dr., Chicago IL***

Wow! A must-see for any space junkie! Open weekdays 9:30-4:00 and weekends 9:30-4:30. There is a general admission fee. Visit <http://www.adlerplanetarium.org/> for complete pricing information. Telephone (312) 922-7827

## ***Yerkes Observatory, 373 W. Geneva St., Williams Bay WI 53191***

Yerkes is a research institution associated with the University of Chicago. Free tours of the institution are held each Saturday at 10 a.m., 11 a.m. and 12 p.m. The observatory is home to the world's largest refractor telescope. Telephone (262) 245-5555. <http://astro.uchicago.edu/yerkes/>

## **NASA's educational site**

<http://www.nasa.gov/audience/forstudents/index.html>

Have fun exploring!

*(Website addresses were current as of January 20, 2019)*

# Attention Parents and Guardians

---

This handbook contains emergency information and maps for departure/return sites. The Lead Advisors' and roll-taker's emergency telephone numbers will be sent to parents/guardians in April. Please keep this information nearby for reference.

## Telephone Numbers for Emergencies or Questions:

WI 4-H Educational Program Specialist (Amber Rehberg)	608-294-8131
WI 4-H Office Operations Associate (Justin Lieck) – Office 7:45-3:45 p.m.	608-263-5971
WI 4-H State Office <b>emergency only</b> (after 4:00 p.m. & weekend)	608-294-8131
Space Camp General Information Number	256-837-3400
Space Camp emergency (24-hour operator)	256-721-7198
Space Camp Nurses' Station	256-721-7162
Space Camp Gift Shop	256-837-6704

Please do not call your child during program hours. Instead, ask him/her to call you when it's convenient during non-program hours. Cell phones may be used for pictures throughout the day; however, they are discouraged from being used in any other way throughout the program except in cases of emergency.

**Special diet?** Space Camp will try to accommodate trainees with special dietary requirements. If the requirement exceeds their capabilities, trainees can bring their own food and/or pay the additional cost of meeting those needs. Space Camp is able to handle all dietary requests besides Kosher. Parents/guardians will enter dietary/allergy information while registering online for Space Camp. Any additional requests may be sent to Justin Lieck at [Justin.lieck@ces.uwex.edu](mailto:Justin.lieck@ces.uwex.edu).

**Special needs** are also accommodated to the best of our ability. Please advise us ahead of time so advance arrangements can be made.

**Return itinerary:** Please keep the boarding/return map where you can find it quickly on Monday. The return times are educated estimates based on past experiences; however, delays may occur for any number of reasons such as heavy traffic, weather, mechanical problems, etc. Please be patient if there is a delay! We will have participants call or text with approximate arrival times.

# Wisconsin 4-H Camp Counselor

---

**Returning delegates** to the Space Camp program are invited to apply for a leadership role on the Wisconsin 4-H Space Camp Counselor Team. A State 4-H committee will review applications, conduct interviews, make selections, and announce the Wisconsin 4-H Space Camp Counselor Team by late January. There is no pre-established number of selected recipients; instead the number of selections is based on qualifications and number needed for Space Camp. All applicants will be notified of their status by mail.

## CRITERIA FOR SELECTION

1. Must have participated in Space Camp program at least once.
2. Must be in 8<sup>th</sup>-10<sup>th</sup> grade (maximum age 16 at time of program).
3. Must have good communication and leadership skills and work well in groups.
4. Must complete and submit the application to your county 4-H Office before the deadline.
5. Must participate in a telephone interview. A Selection Committee member will contact finalists.

## ROLES AND RESPONSIBILITIES

Wisconsin 4-H Space Camp Counselors are required to:

1. Participate in the Camp Counselor Orientation teleconference in early February.
2. Participate in other Camp Counselor teleconferences as scheduled.
3. Participate in a mandatory face-to-face training workshop in Madison on Friday evening through Saturday afternoon in late February or March (lodging will be provided).
4. Attend and participate in the workshop for Space Campers to set up and assist with a Question/Answer table.
5. Teach and facilitate an Aerospace project activity at the delegate meet and greet/orientation.
6. Assist at departure with luggage, nametags, bus check-in, and other duties as needed. (Arrive 1 hour before listed loading time.) Parents: be prepared to wait with them!
7. Take attendance on bus following initial orientation and at other stops.
8. Provide a self-introduction and host an informal Question/Answer session on the bus.
9. Plan and conduct at least two icebreakers/games that can be conducted during the bus trip.
10. Be responsible for ensuring that the bus is kept clean throughout the program.
11. Assist at the hotel, as needed or assigned.
12. Assist as needed or assigned with directions upon arrival at Space Camp.
13. Serve as a resource and mentor to fellow Space Campers and answer questions as needed.

## BENEFITS

- Leadership, organizational, public speaking, and mentoring opportunities on a national 4-H experience.
- Satisfaction of helping others



# University of Wisconsin Extension 4-H Youth Development Programs

Space Camp, Huntsville, Alabama, April 25-29, 2019

For your reference and review, copied below is the 4HOnline Code of Conduct signed by both participant and parent/guardian.

## Wisconsin 4-H Youth Development Code of Conduct

As a 4-H participant, I will:

- Adhere to program rules, curfews, dress codes, policies, and rules of the facility being used.
- Conduct myself in a courteous, respectful manner, use appropriate language, exhibit good sportsmanship, and provide a positive role model.
- Comply with local, state and federal laws.
- Abstain from use of alcohol, illicit drugs, and tobacco during 4-H events and activities.
- Fully participate in scheduled activities and orientations.
- Respect others' property and privacy rights.
- Abstain from child abuse (physical, sexual, emotional and neglect), harassment, hazing and bullying.
- Accept personal responsibility for behavior including any financial damage.
- Adhere to safety rules.

Consequences for violating any part of this Code of Conduct may include, but are not limited to:

- Removal from participation in the event in which the Code of Conduct has been violated (at the individual's expense).
- Suspension of 4-H membership.
- Sanctions on participation in future 4-H events.
- Forfeiture or repayment of financial support for the event.
- Removal from leadership positions held.
- Loss of status as a "member in good standing."

It is the responsibility of all program participants to reinforce the code of conduct and intervene when necessary to enforce the rules.



## MEMORANDUM

Date: April 13, 2019

From: Amber Rehberg, WI 4-H Educational Program Specialist

To: School Officials

Re: Absence for 4-H Youth Participating in Space Camp at Huntsville, AL

The University of Wisconsin Extension 4-H Youth Development Program is sponsoring an organized program for 4-H youth to the U.S. Space & Rocket Center in Huntsville, Alabama, scheduled April 25-29, 2019. This is an educational opportunity that encourages a lifelong interest in science and math among 4-H youth who may already be enrolled in an Aerospace Project. The Space Camp Program also promotes teamwork, decision making, problem solving and other attributes that benefit campers long after camp ends. Wisconsin 4-H will send approximately 200 students and Adult Advisors to join over 450 youth from across the country during the program.

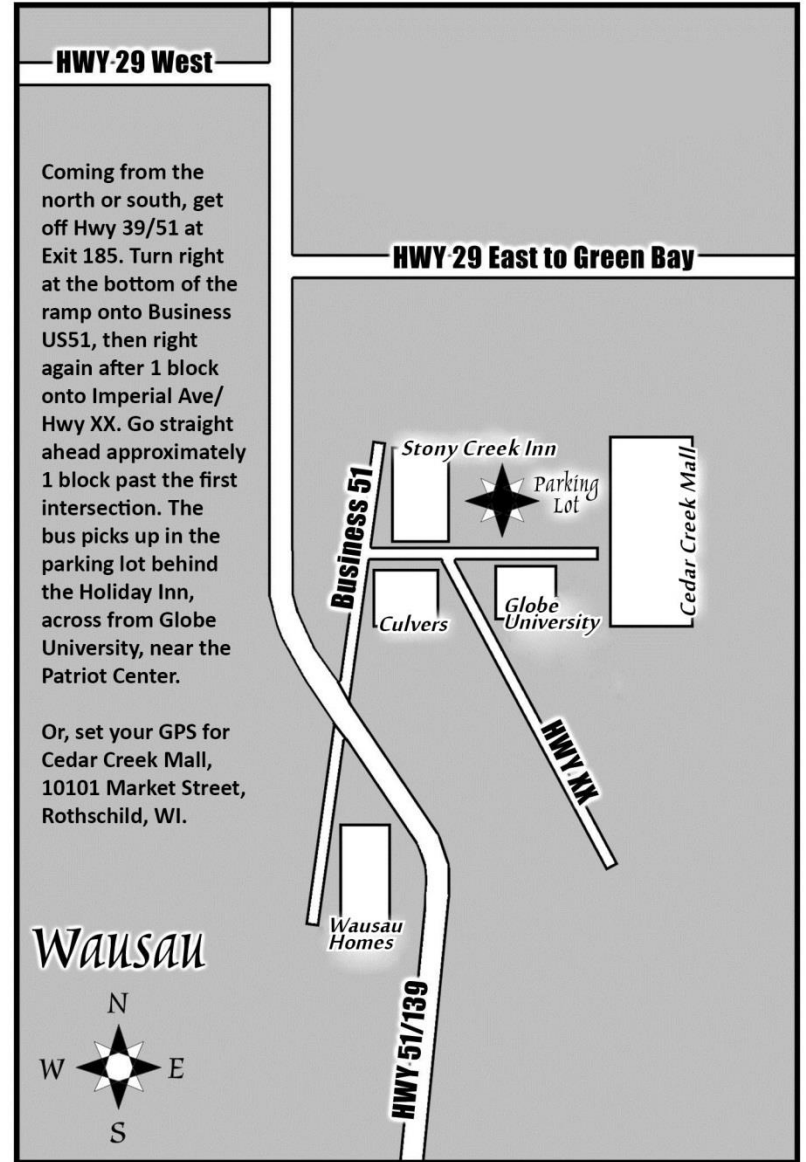
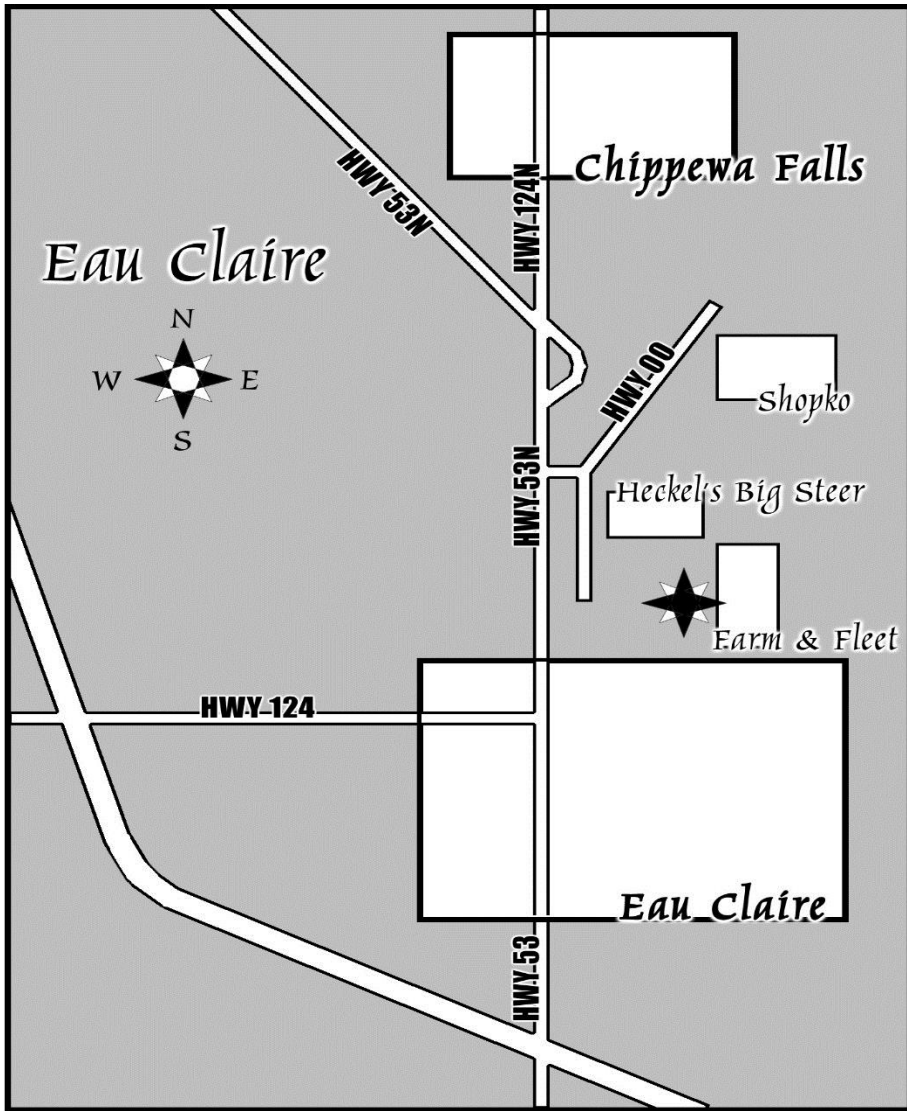
Workshops will focus on current and historical space missions, exploration, technology, rocket construction, simulation of space travel and current career opportunities.

Please excuse this student from classes on Thursday-Monday, April 25-29, 2019 to participate in the Space Camp experience. (Please consult the roster of attendees, which has been sent to each participant.) Students will return home early on Monday, but after sleeping on the bus overnight, may be too tired from their long weekend to attend classes that day. We anticipate students will return to school Tuesday morning full of enthusiasm and information to share about aerospace!

If you have questions, please contact me at [amber.rehberg@ces.uwex.edu](mailto:amber.rehberg@ces.uwex.edu) or 608-262-1557.



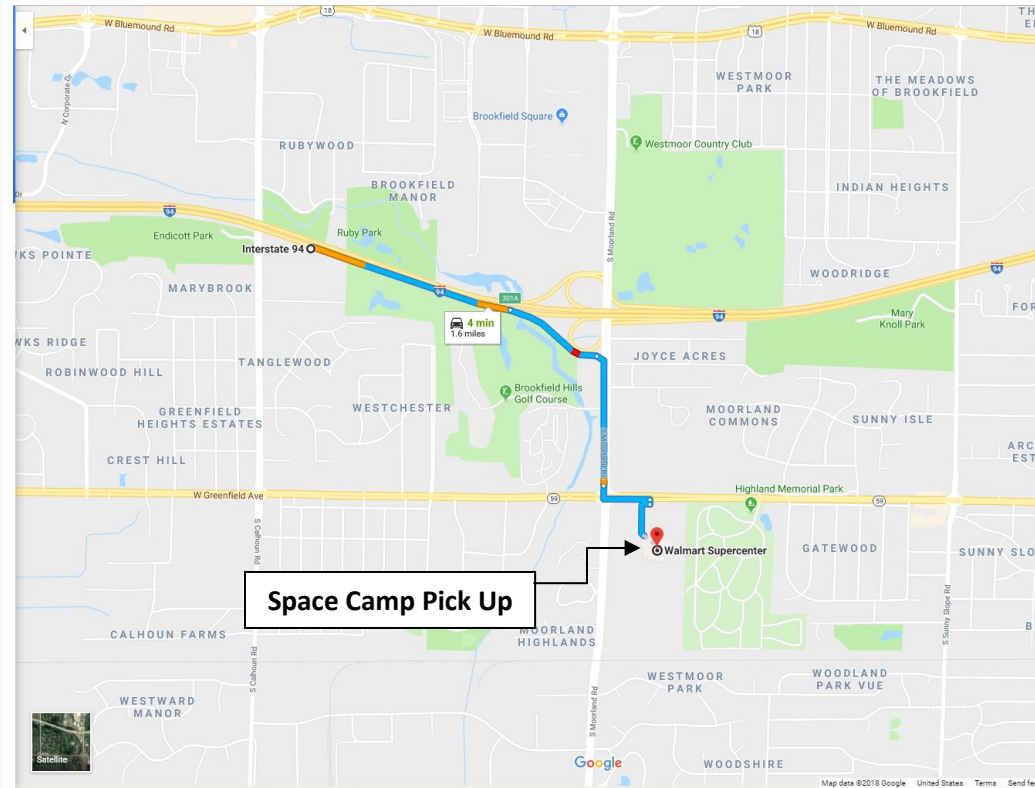
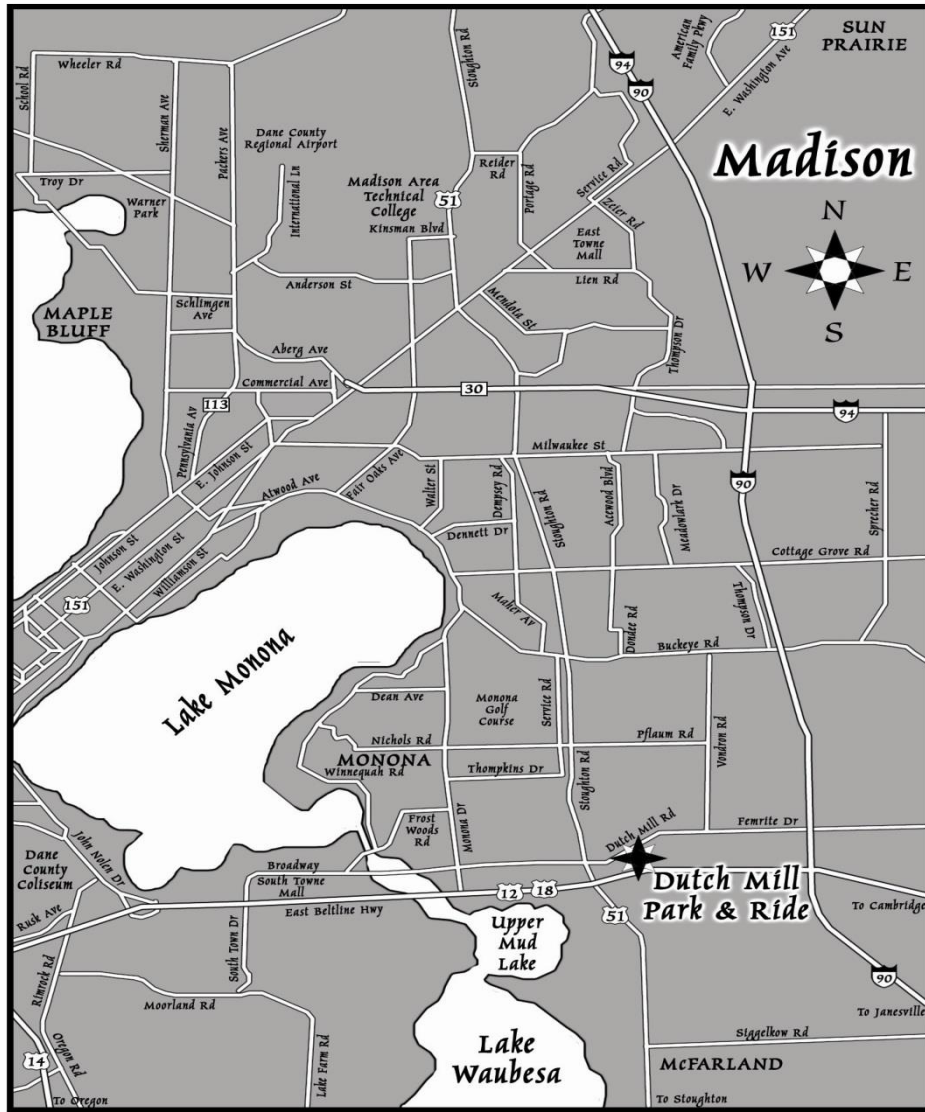
## Boarding and Disembarking Maps



Coming from the north or south, get off Hwy 39/51 at Exit 185. Turn right at the bottom of the ramp onto Business US51, then right again after 1 block onto Imperial Ave/ Hwy XX. Go straight ahead approximately 1 block past the first intersection. The bus picks up in the parking lot behind the Holiday Inn, across from Globe University, near the Patriot Center.

Or, set your GPS for Cedar Creek Mall, 10101 Market Street, Rothschild, WI.

For Eau Claire site the actual street address is 2583 S Prairie View Rd. Chippewa Falls, WI. This is off of exit Bus 53/124 at County Hwy 124.



**Space Camp Pick Up**

**Directions to Milwaukee pick-up/drop-off point  
(Walmart 15205 W Greenfield Ave, New Berlin, WI 53151)**

**From East:** Heading East on I-94 take exit **301A-301B** for **Moorland Rd**. Turn right onto S Moorland Rd (signs for New Berlin). Use the 2<sup>nd</sup> from the left lane to turn left onto W Greenfield Ave. Turn right and the destination will be on the right.

**From West:** Heading West on I-94 take exit **301A** for **Moorland Rd S**. Merge onto S Moorland Rd. Use the 2<sup>nd</sup> from the left lane to turn left onto W Greenfield Ave. Turn right and the destination will be on the right.

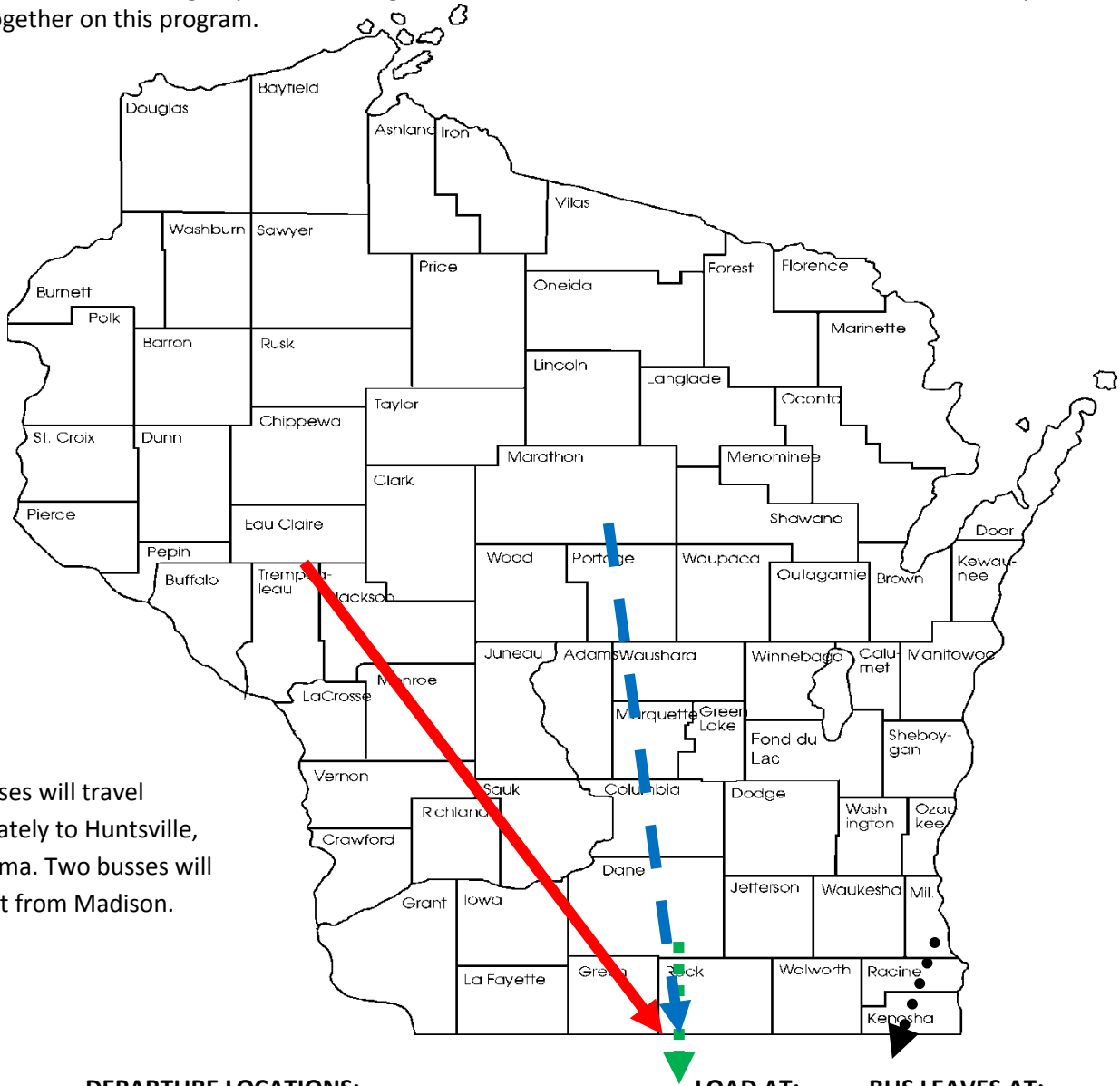
## 2019 SPACE CAMP DEPARTURE

Thursday, April 25

### LOCATIONS AND APPROXIMATE TIMES

Be sure to use the restroom before you reach the pick-up location - it is not guaranteed that one will be available to you as you wait for the bus.

**BE EARLY! BUSES WILL NOT WAIT FOR STRAGGLERS.** These locations are relatively safe, but you still need to be smart. Stay in your car or with a group while waiting for the coach to arrive. Five busses are scheduled but may not always travel together on this program.



All buses will travel separately to Huntsville, Alabama. Two busses will depart from Madison.

CITY:	DEPARTURE LOCATIONS:	LOAD AT:	BUS LEAVES AT:
<b>Chippewa Falls</b>	<b>Farm &amp; Fleet</b> parking lot, 2583 S Prairie View Rd. (Exit Bus 53/124 at County Hwy 124)	7:30 a.m.	8:00 a.m. Thursday
<b>Wausau</b>	<b>Cedar Creek Mall</b> parking lot (Take the Schofield/Rothschild Exit #185 Off Hwy 51)	7:30 a.m.	8:00 a.m. Thursday
<b>Milwaukee</b>	<b>Walmart</b> parking lot: 15205 W Greenfield Ave, New Berlin Brookfield (See site map for directions)	9:30 a.m.	10:00 a.m. Thursday
<b>Madison</b>	<b>Dutch Mill Rd Park 'n Ride</b> lot (Hwy 51 South) (exit off Hwy 12 Corner of Hwy 51 and Dutch Mill Rd.; 46 Collins Ct.)	10:00 a.m.	10:30 a.m. Thursday

# 2019 SPACE CAMP RETURN

Monday, April 29

## LOCATIONS AND APPROXIMATE TIMES



Depending on numbers, busses will either all travel to Madison before returning to original site or return to original pick up sites alone.

CITY:	RETURN LOCATIONS:	AT APPROXIMATELY:
<b>Madison</b>	<b>Dutch Mill Rd Park 'n Ride</b> lot (Hwy 51 South exit off Hwy 12 (46 Collins Ct.; corner of Hwy 51 and Dutch Mill Rd.))	5:45 a.m. Monday
<b>Milwaukee</b>	<b>Walmart</b> parking lot: 15205 West Greenfield Ave, New Berlin (See site map for directions)	7:00 a.m. Monday
<b>Wausau</b>	<b>Cedar Creek Mall</b> parking lot (Take the Schofield/Rothschild Exit#185 off Hwy 51)	8:00 a.m. Monday
<b>Chippewa Falls</b>	<b>Farm &amp; Fleet</b> Parking lot, 2583 S Prairie View Rd. (Exit Bus 53/124 at County Hwy 124)	8:15 a.m. Monday

**Wisconsin 4-H Youth Development 2019 Space Camp Program  
Health Form Update/Changes**

**To be completed by participant's parent or guardian immediately prior to travel.  
If there are no changes, please indicate it where requested.**

Youth participant's name (please print) \_\_\_\_\_

1. Are there any changes in your child's health status since you last updated his/her health form in 4HOnline?  
 No  Yes  
 If yes, please describe:

2. Has your child or anyone in your family been sick or exposed to any communicable disease in the past month?  
 No  Yes

3. Does your child have any rashes or open sores?  No  Yes

4. List current medications below:

Medication Name	Reason	Dosage (mg)	Times of day given	Side Effects	Special Instructions	Prescribing Physician's Name and Phone Number

List any special instructions or additional information regarding the medication that would be helpful to the Health Care staff \_\_\_\_\_  
 \_\_\_\_\_

5. Does your child have any recent injury or activity restrictions?  No  Yes

6. Will the custodial parent(s) or guardian be available at the numbers listed on the submitted health form?  
 No  Yes

If NO, list the name and phone number of person(s) authorized to make decisions on your child's behalf if different than the emergency contact listed on the health form.

Emergency contact name \_\_\_\_\_ Tel (\_\_\_\_) \_\_\_\_\_

Parent/Guardian signature \_\_\_\_\_ Date \_\_\_\_\_

**Youth: Bring this form to the bus boarding site to give to the First Aid Coordinator.**

